

**L.M.A.C.**  
**Alcohol Tobacco & Other Drugs**  
**2007-2008 Survey**

**of the**  
**Livingston School District**  
**Grades 4-12**

Substance abuse and its related problems are among societies most pervasive of health and social concerns.

National Institute on Drug Abuse (NIDA)

This is the reason for Livingston's Drug and Alcohol Survey.

# About the survey .....

With the support of the Livingston Public Schools, the Municipal Alliance administered the “American Drug and Alcohol Survey” this year (2007-08) to students in grades 4 – 12 in the Livingston Public Schools. The survey also covers consequences to alcohol and other drugs, namely: violence, bullying, academics and family/peer relationships. The results of the report issued by the Rocky Mountain Behavioral Science Institute (RMBSI) are referenced here with comments on trends, current programs and recommendations. All data is available online through the Livingston Public Schools website ([www.livingston.org](http://www.livingston.org)).

# Active vs. Passive Consent



- 20% - 70% response rate
- Results tend to show lower amounts of usage
- Surveys are anonymous to staff and students

Noll, R.B., Zeller, M.H., Vannatta, K., Bukowski, W., & Davies, W.H. 1997. "Potential bias in classroom research: Comparison of children with permission and those who do not receive permission to participate." *Journal of Clinical Child Psychology*, 26(1). 36-42.

# Number of Students Surveyed

	<u>2001/02</u>		<u>2004/05</u>		<u>2007/08</u>	
<b>Livingston Elementary Schools</b>						
Number Enrolled	734		759		895	
Number Surveyed	721	98%	515	67%	694	78%
<b>Livingston Middle Schools</b>						
Number Enrolled	1129		1192		1265	
Number Surveyed	1095	97%	889	75%	973	77%
<b>Livingston High School</b>						
Number Enrolled	1439		1572		1662	
Number Surveyed	1350	94%	1105	70%	1091	66%
<b><u>Totals:</u></b>						
<b>Number Enrolled</b>	<b>3302</b>		<b>3523</b>		<b>3822</b>	
<b>Number Surveyed</b>	<b>3166</b>	<b>96%</b>	<b>2509</b>	<b>71%</b>	<b>2758</b>	<b>72%</b>

# Substance Use/Abuse Nationwide

- Fewer youths are using marijuana, LSD and ecstasy, but more are abusing prescription drugs (stimulants, pain killers)
- Marijuana usage in the "last month" decreased 5% for 12-17 y.o. & 30% for 12-13 y.o.
- Binge drinking and heavy drinking has not changed
- Drinking and driving has decreased but impaired driving has increased (almost 1 in 5 car crash victims at the Univ. of Maryland Trauma Unit tested positive for THC under the age of 18)

**Source:** <http://monitoringthefuture.org>

# Percent of 4<sup>th</sup> and 5<sup>th</sup> Graders Who Have "Ever-Tried" a Drug

<u>4<sup>th</sup> Graders</u>	<u>1995/96</u>	<u>1998/99</u>	<u>2001/02</u>	<u>2004/05</u>	<u>2007/08</u>
<b>Alcohol</b>	20%	16%	11%	9%	9%
<b>Marijuana</b>	0%	<1%	<1%	<1%	1%
<b>Inhalants</b>	5%	7%	8%	8%	<b>9%</b>

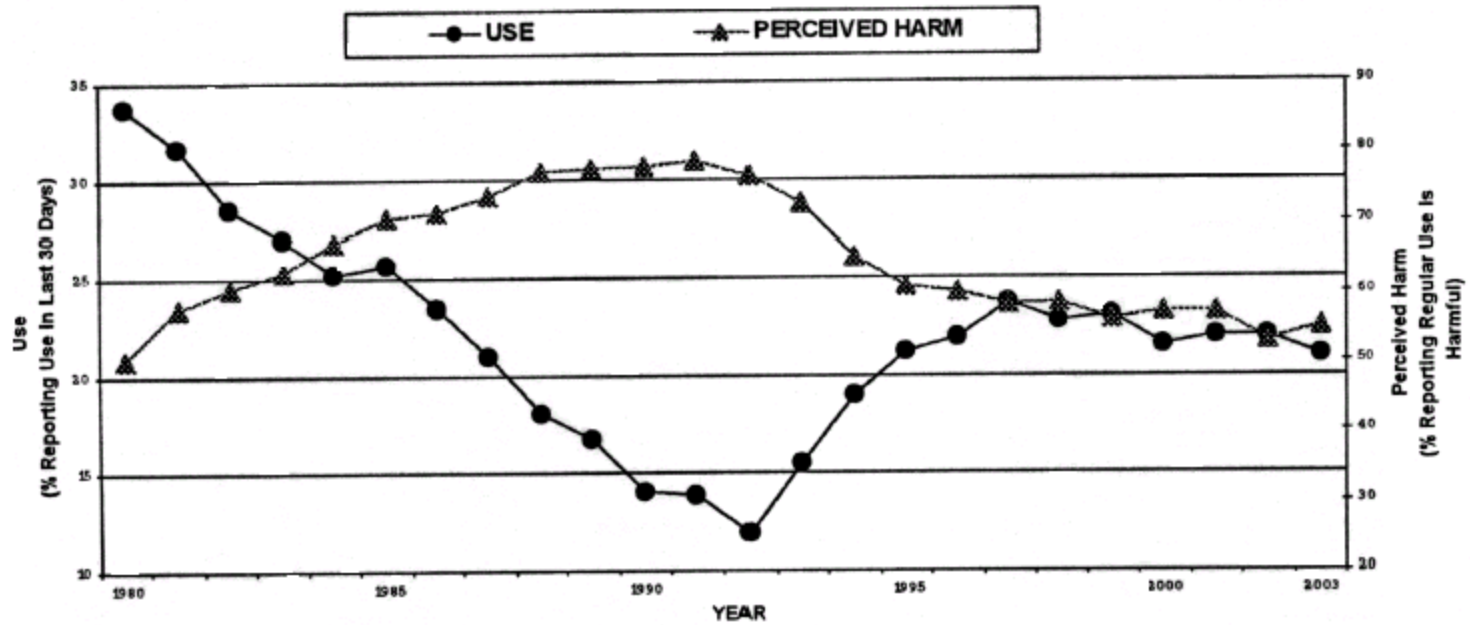
<u>5<sup>th</sup> Graders</u>	<u>1991/92</u>	<u>1995/96</u>	<u>1998/99</u>	<u>2001/02</u>	<u>2004/05</u>	<u>2007/08</u>
<b>Alcohol</b>	30%	20%	16%	11%	8%	9%
<b>Marijuana</b>	0%	0%	0%	<1%	0%	<1%
<b>Inhalants</b>	4%	5%	5%	6%	6%	6%

# Where Elementary Students Have Used Alcohol

	<u>4<sup>th</sup> Graders</u>		<u>5<sup>th</sup> Graders</u>	
	'04/'05	'07/'08	'04/'05	'07/'08
<b>Never Used it</b>	87%	83%	86%	85%
<b>Only with Parents or family</b>	12%	<b>16%</b>	14%	13%
<b>With other kids when parents were not there</b>	0%	0%	0%	0%
<b>Only by myself</b>	<1%	0%	0%	<1%
<b>By myself and with other kids when parents not there</b>	<1%	0%	0%	0%



# Perceived Harm vs. Usage 1980-2003



# Percent of Elementary Students Who believe substance use will lead to “a lot” of harm

	<u>4<sup>th</sup> Graders</u>		<u>5<sup>th</sup> Graders</u>	
	'04/'05 – '07/'08	'04/'05 – '07/'08	'04/'05 – '07/'08	'04/'05 – '07/'08
<b>Use Alcohol</b>	64%	<b>61%</b>	<b>57%</b>	<b>57%</b>
<b>Get Drunk</b>	74%	77%	79%	82%
<b>Smoke Cigarettes</b>	81%	87%	80%	86%
<b>Sniff glue, gas, etc.</b>	60%	63%	61%	69%
<b>Use marijuana</b>	74%	81%	87%	89%
<b>Use any other drugs</b>	74%	83%	79%	82%

## Percent of Elementary School Female Students Reporting Victimization

	<u>4<sup>th</sup> Graders</u>				<u>5<sup>th</sup> Graders</u>		
	<u>'01/'02</u>	<u>'04/'05</u>	<u>'07/'08</u>		<u>'01/'02</u>	<u>'04/'05</u>	<u>'07/'08</u>
<b>Been beaten up by someone your own age</b>	11%	4%	<b>5%</b>		1%	3%	<b>4%</b>
<b>Had something stolen from you</b>	17%	18%	<b>21%</b>		22%	22%	22%
<b>Been hurt with a club, knife, or gun</b>	1%	<1%	<b>3%</b>		<1%	<1%	<1%
<b>Been pushed around by other kids</b>	26%	29%	26%		18%	28%	20%

# Percent of Elementary School Male Students Reporting Victimization

	<u>4<sup>th</sup> Graders</u>				<u>5<sup>th</sup> Graders</u>		
	<u>'01/'02</u>	<u>'04/'05</u>	<u>'07/'08</u>		<u>'01/'02</u>	<u>'04/'05</u>	<u>'07/'08</u>
<b>Been beaten up by someone your own age</b>	20%	11%	<b>17%</b>		10%	7%	<b>12%</b>
<b>Had something stolen from you</b>	25%	23%	<b>27%</b>		28%	28%	<b>31%</b>
<b>Been hurt with a club, knife, or gun</b>	3%	<1%	<b>3%</b>		3%	2%	1%
<b>Been pushed around by other kids</b>	37%	32%	<b>34%</b>		30%	33%	<b>38%</b>

# Recommendations

- Future surveys should include younger ages/grades
- Coordination of K-12 Guidance and Health curricula to address issues of ATOD/violence/victimization  
(specifically: Inhalants/Alcohol/THC)
- Training/Lessons on social /emotional issues as well as COSA issues
- Increased coordination between schools and community
- Increased COSA trainings for counselors and staff
- Education/Awareness related to Internet Safety & Cyberbullying

# Age of LHS 12<sup>th</sup> Graders When They First Tried Drugs

Age:	7-9	10-12	<u>13-15</u>	16+	Never tried
Alcohol	5%	3%	51%	21%	20%
	<i>Average age 14.4 years</i>				
Drunk	1%	1%	31%	22%	45%
	<i>Average age 15.1 years</i>				
Cigarettes	1%	3%	7%	14%	75%
	<i>Average age 14.9 years</i>				
THC	0%	1%	22%	15%	62%
	<i>Average age 15.2 years</i>				
Inhalants	1%	0%	1%	1%	97%
	<i>Average age 13.4 years</i>				

# Percent of 6<sup>th</sup> Graders Who Have “Ever-Tried” a Drug

	<u>1995-96</u>	<u>1998-99</u>	<u>2001-02</u>	<u>2004-05</u>	<u>2007-08</u>
<b>Alcohol</b>	21%	28%	9%	10%	<b>12%</b>
<b>Cigarettes</b>	5%	2%	<1%	<1%	<b>2%</b>
<b>Marijuana</b>	0%	<1%	0%	0%	<1%
<b>Cocaine</b>	0%	<1%	0%	0%	0%
<b>Stimulants</b>	0%	<1%	0%	0%	<1%
<b>Legal Stimulants</b>	1%	0%	0%	0%	<b>5%</b>
<b>Inhalants</b>	3%	4%	4%	6%	0
<b>Nitrites</b>	0%	<1%	<1%	2%	0
<b>Downers</b>	<1%	<1%	0%	0%	<1%
<b>Tranquilizers</b>	<1%	<1%	0%	0%	0%
<b>Hallucinogens</b>	0%	<1%	<1%	0%	<1%
<b>PCP</b>	0%	<1%	0%	0%	0%
<b>Narcotics other than Heroin</b>	<1%	0%	<1%	<1%	0%
<b>Heroin</b>	0%	0%	0%	0%	0%

# Percent of 7<sup>th</sup> Graders Who Have "Ever-Tried" a Drug

	<u>1995-96</u>	<u>1998-99</u>	<u>2001-02</u>	<u>2004-05</u>	<u>2007-08</u>
<b>Alcohol</b>	45%	47%	24%	19%	14%
<b>Cigarettes</b>	17%	10%	6%	2%	3%
<b>Marijuana</b>	3%	2%	2%	<1%	<1%
<b>Cocaine</b>	<1%	1%	0%	<1%	<1%
<b>Stimulants</b>	1%	1%	0%	0%	<1%
<b>Legal Stimulants</b>	3%	1%	<1%	<1%	<1%
<b>Inhalants</b>	8%	6%	7%	8%	4%
<b>Nitrites</b>	1%	1%	2%	<1%	0%
<b>Downers</b>	<1%	<1%	0%	<1%	0%
<b>Tranquilizers</b>	0%	1%	0%	<1%	<1%
<b>Hallucinogens</b>	2%	2%	0%	<1%	<1%
<b>PCP</b>	<1%	1%	0%	0%	0%
<b>Narcotics other than Heroin</b>	1%	1%	<1%	<1%	0%
<b>Heroin</b>	0%	0%	0%	<1%	



# Percent of 8<sup>th</sup> Graders Who Have "Ever-Tried" a Drug

	<u>1991-92</u>	<u>1995-96</u>	<u>1998-99</u>	<u>2001-02</u>	<u>2004-05</u>	<u>2007-08</u>	<b>Nat. '06</b>
<b>Alcohol</b>	65%	49%	57%	36%	31%	20%	<b>41%</b>
<b>Cigarettes</b>	27%	20%	28%	11%	4%	2%	<b>25%</b>
<b>Marijuana</b>	3%	4%	9%	4%	1%	0%	<b>16%</b>
<b>Cocaine</b>	<1%	1%	1%	0%	0%	0%	<b>3%</b>
<b>Stimulants</b>	0%	<1%	2%	<1%	<1%	<1%	<b>7%</b>
<b>Legal Stimulants</b>	4%	2%	2%	<1%	<1%		
<b>Inhalants</b>	11%	9%	10%	7%	8%	2%	<b>16%</b>
<b>Nitrites</b>	0%	<1%	1%	2%	<1%		
<b>Downers</b>	<1%	0	<1%	0%	0%		
<b>Tranquilizers</b>	0%	0%	<1%	0%	0%	0%	<b>4%</b>
<b>Hallucinogens</b>	1%	2%	2%	<1%	0%	0%	
<b>PCP</b>	<1%	<1%	1%	0%	0%	0%	
<b>Narcotics other than Heroin</b>	2%	<1%	1%	2%	<1%	0%	
<b>Heroin</b>	0%	0%	0%	0%	<1%		<b>1%</b>

# Percent of Middle School Students Who Have Used "In the last Month"

	6 <sup>th</sup> Graders			7 <sup>th</sup> Graders			8 <sup>th</sup> Graders			Nat. '06
	<u>01-02</u>	<u>04-05</u>	<u>07-08</u>	<u>01-02</u>	<u>04-05</u>	<u>07-08</u>	<u>01-02</u>	<u>04-05</u>	<u>07-08</u>	
<b>Alcohol</b>	3%	2%	<b>4%</b>	9%	7%	3%	15%	11%	4%	<b>17%</b>
<b>Been Drunk</b>	0%	0%	0%	1%	0%	<1%	<1%	0%	0%	<b>6%</b>
<b>Cigarettes</b>	0%	<1%	<1%	1%	<1%	<1%	4%	1%	0%	<b>9%</b>
<b>Smokeless Tobacco</b>	<1%	<1%	<1%	<1%	<1%	0%	<1%	0%	0%	<b>4%</b>
<b>Marijuana</b>	0%	0%	0%	<1%	0%	0%	1%	0%	0%	<b>7%</b>
<b>Cocaine</b>	0%	0%	0%	0%	0%	0%	0%	0%	0%	<b>1%</b>
<b>Stimulants</b>	0%	0%	0%	0%	0%	0%	0%	0%	0%	<b>2%</b>
<b>Inhalants</b>	1%	1%	<1%	2%	1%	0%	2%	2%	<1%	<b>4%</b>
<b>Downers</b>	0%	0%	0%	0%	0%	0%	0%	0%	0%	<b>N/A</b>
<b>Hallucinogens</b>	0%	0%	0%	0%	0%	0%	0%	0%	0%	<b>1%</b>
<b>PCP</b>	0%	0%	0%	0%	0%	0%	0%	0%	0%	<b>N/A</b>
<b>Heroin</b>	0%	0%	0%	0%	0%	0%	0%	0%	0%	<b>&lt;1%</b>
<b>Narcotics other than heroin</b>	0%	0%	0%	0%	0%	0%	0%	0%	0%	<b>N/A</b>

# Percent of Middle School Students Who Believe That Using a Substance *Regularly* Will Lead to "A Lot" of Harm

	6 <sup>th</sup> Graders			7 <sup>th</sup> Graders			8 <sup>th</sup> Graders		
	<u>01-02</u>	<u>04-05</u>	<u>07-08</u>	<u>01-02</u>	<u>04-05</u>	<u>07-08</u>	<u>01-02</u>	<u>04-05</u>	<u>07-08</u>
<b>Alcohol</b>	32%	30%	32%	30%	32%	38%	33%	31%	30%
<b>Get Drunk</b>	95%	97%	96%	95%	97%	98%	94%	97%	<b>98%</b>
<b>Marijuana</b>	67%	77%	<b>73%</b>	71%	82%	85%	66%	76%	<b>84%</b>
<b>LSD</b>	54%	57%	N/A	52%	60%	N/A	62%	62%	N/A
<b>Inhalants</b>	63%	63%	61%	57%	75%	78%	64%	66%	<b>80%</b>
<b>Uppers</b>	54%	53%	58%	50%	57%	69%	58%	57%	<b>79%</b>
<b>Cocaine</b>	66%	70%	74%	70%	81%	86%	72%	80%	<b>89%</b>
<b>Cigarettes</b>	67%	74%	75%	71%	76%	83%	64%	70%	<b>76%</b>

# Where Livingston Middle School Students Have Used Alcohol

	6 <sup>th</sup> Graders		7 <sup>th</sup> Graders		8 <sup>th</sup> Graders	
	<u>'01/'02</u> <u>04/05</u>	<u>07/08</u>	<u>04/05</u>	<u>07/08</u>	<u>04-05</u>	<u>07/08</u>
<b>Right after school</b>	0%	0%	0%	0%	<1%	<1%
<b>At Parties</b>	<1%	<1%	4%	4%	9%	7%
<b>At Night with Friends</b>	0%	<1%	2%	1%	9%	3%
<b>While Driving Around</b>	0%	0%	0%	<1%	<1%	0%
<b>At Home (parents knew)</b>	<b>6%</b>	<b>7%</b>	<b>12%</b>	<b>7%</b>	<b>15%</b>	<b>10%</b>
<b>At Home (parents didn't know)</b>	0%	<1%	1%	2%	6%	1%

# Tobacco Use by Middle School Students

	<b>6<sup>th</sup> Graders</b>		<b>7<sup>th</sup> Graders</b>		<b>8<sup>th</sup> Graders</b>	
	<b><u>04/05</u></b>	<b><u>07/08</u></b>	<b><u>04/05</u></b>	<b><u>07/08</u></b>	<b><u>04/05</u></b>	<b><u>07/08</u></b>
<b><u>Cigarettes</u></b>						
Ever Used	<1%	<b>2%</b>	2%	<b>3%</b>	4%	2%
<b><u>Cigars</u></b>						
Ever Used	1%	<1%	4%	3%	5%	2%
<b><u>Smokeless Tobacco</u></b>						
Ever Used	<1%	1%	<1%	1%	0%	1%

# Recommendations

- Overall statistics suggest we are doing very well, and as a community we should continue and expand wherever possible (ongoing assessment)
- Continued coordination between/among LMAC, School District, LYCS, HCHY, Youth Coordinators, Community Resources
- Expand survey in Middle Schools concerning violence/victimization: training related to: Internet Safety – personal profiles & implications Internet Bullying

# Recommendations (cont.)

- Community awareness & education related to:  
Alcohol usage "at home" Use/Misuse of Legal Stimulants
- Teenage Gambling (indicators & "accompanying accessories")
- Track current 6<sup>th</sup> grade

# LHS 9<sup>th</sup> Graders Intentions Regarding Future Drug Use

- Never used drugs and never will 78%
- Never used drugs, but may in the future 12%
- Used drugs, but do not plan to use them again 6%
- Used drugs and probably will use them again 4%



# Tracking of 4<sup>th</sup> Grade '01/'02 Survey

- The current 10<sup>th</sup> grade, were the 4<sup>th</sup> grade of '01/'02
- The following data demonstrates a reduction in overall usage as well as significantly lower usage rates than the national averages
- But also a significant increase in "occasional" drug use and "light" marijuana use in the 10<sup>th</sup> grade

# **Percent of Livingston High School 10<sup>th</sup> Graders Who Have "Ever Tried" a Drug**

	<b><u>1991-92</u></b>	<b><u>1995-96</u></b>	<b><u>1998-99</u></b>	<b><u>2001-02</u></b>	<b><u>2004-05</u></b>	<b><u>2007-08</u></b>	<b><u>Nat. '06</u></b>
<b>Alcohol</b>	78%	77%	74%	72%	64%	60%	<b>62%</b>
<b>Cigarettes</b>	46%	50%	40%	36%	15%	11%	<b>36%</b>
<b>Marijuana</b>	7%	32%	21%	33%	19%	8%	<b>32%</b>
<b>Inhalants</b>	8%	12%	6%	4%	6%	3%	<b>13%</b>

# Percent of Livingston High School 12<sup>th</sup> Graders Who Have "Ever Tried" a Drug

	<u>1991-92</u>	<u>1995-96</u>	<u>1998-99</u>	<u>2001-02</u>	<u>2004-05</u>	<u>2007-08</u>	<u>Nat. '06</u>
<b>Alcohol</b>	92%	91%	91%	87%	75%	<b>78%</b>	<b>73%</b>
<b>Cigarettes</b>	51%	62%	59%	52%	29%	24%	<b>47%</b>
<b>Marijuana</b>	27%	43%	43%	47%	34%	<b>37%</b>	<b>42%</b>
<b>Inhalants</b>	6%	19%	6%	8%	5%	3%	<b>11%</b>

# Percent of Livingston High School Students & 12<sup>th</sup> Graders Across Country Who Have Used Each Drug in the Last Month

	9 <sup>th</sup> Graders		10 <sup>th</sup> Graders		11 <sup>th</sup> Graders		12 <sup>th</sup> Graders		National 12 <sup>th</sup> Graders
	<u>04/05</u>	<u>07/08</u>	<u>04/05</u>	<u>07/08</u>	<u>04/05</u>	<u>07/08</u>	<u>04/05</u>	<u>07/08</u>	<u>2006</u>
							<b>5</b>	<b>8</b>	
<b>Alcohol</b>	22%	18%	36%	28%	47%	37%	51%	<b>50%</b>	<b>45%</b>
<b>Been Drunk</b>	4%	4%	14%	10%	18%	17%	32%	28%	<b>30%</b>
<b>Cigarettes</b>	5%	3%	7%	5%	13%	10%	15%	13%	<b>22%</b>
<b>Marijuana</b>	3%	4%	10%	10%	16%	13%	18%	<b>25%</b>	<b>18%</b>
<b>Inhalants</b>	<1%	0%	<1%	<1%	<1%	<1%	0%	1%	<b>2%</b>
<b>Hallucinogens</b>	0%	0%	0%	<1%	0%	2%	1%	<1%	<b>2%</b>
<b>Heroin</b>	0%	0%	0%	<1%	0%	<1%	0%	0%	<b>&lt;1%</b>

# Where Livingston High School Students Have Used Alcohol

	9 <sup>th</sup> Graders		10 <sup>th</sup> Graders		11 <sup>th</sup> Graders		12 <sup>th</sup> Graders	
	<u>04/05</u>	<u>07/08</u>	<u>04/05</u>	<u>07/08</u>	<u>04/05</u>	<u>07/08</u>	<u>04/05</u>	<u>07/08</u>
<b>During School Hours at school</b>	<1%	<1%	1%	<1%	<1%	1%	2%	<1%
<b>During school hrs away from school</b>	<1%	<1%	2%	<b>3%</b>	1%	<b>2%</b>	2%	2%
<b>Right after school</b>	1%	<1%	3%	2%	2%	3%	6%	4%
<b>Before School Events</b>	2%	<b>4%</b>	7%	6%	15%	14%	18%	<b>20%</b>
<b>At School Events</b>	1%	1%	6%	5%	14%	10%	13%	13%
<b>After School Events</b>	3%	4%	13%	9%	18%	19%	23%	<b>29%</b>
<b>At Parties</b>	25%	19%	40%	36%	47%	51%	60%	58%
<b>At Night with Friends</b>	18%	20%	44%	38%	50%	48%	53%	<b>60%</b>
<b>While Driving Around</b>	<1%	0%	1%	2%	2%	<b>5%</b>	4%	5%
<b>At Home (parents knew)</b>	17%	8%	16%	15%	18%	19%	19%	<b>23%</b>
<b>At Home (parents didn't know)</b>	13%	12%	20%	18%	25%	26%	25%	<b>26%</b>

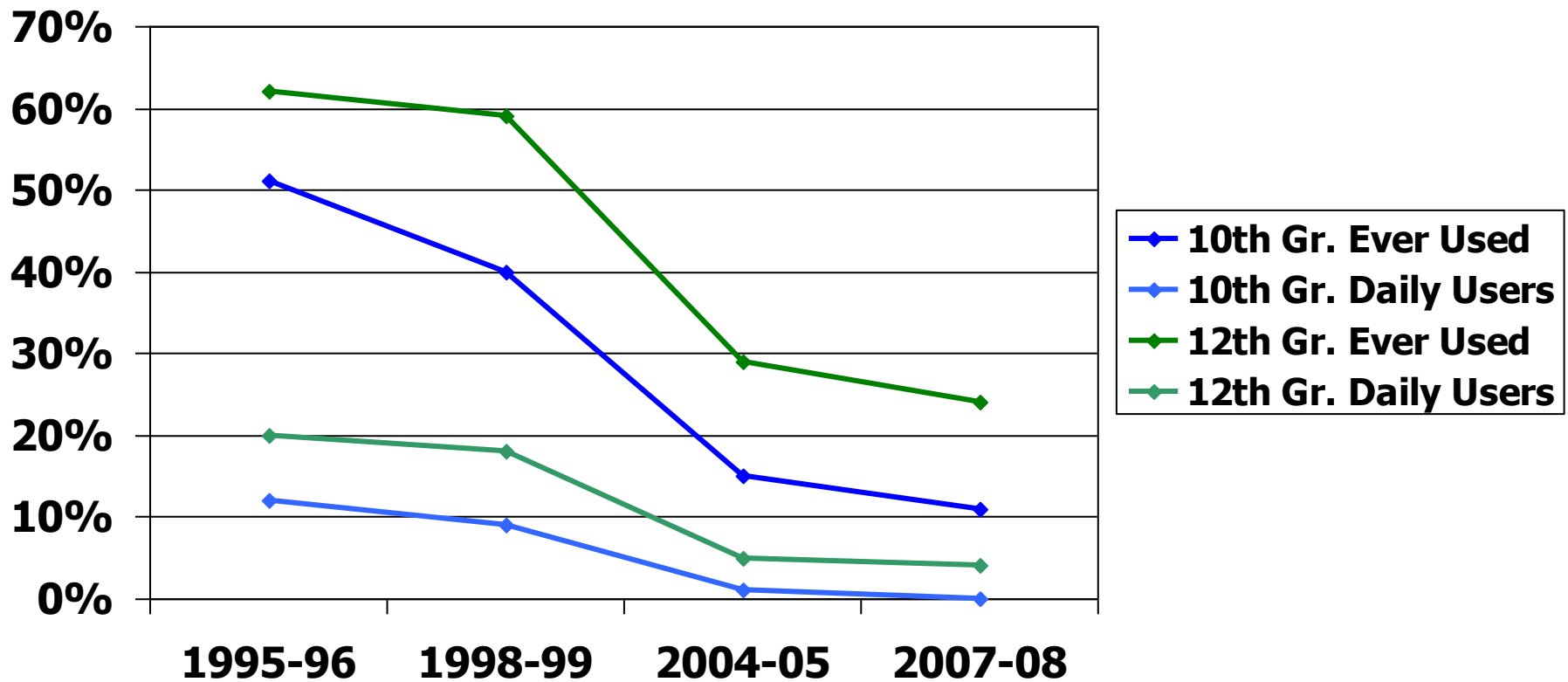
# Where Livingston High School Students Have Used Drugs Other than Alcohol

	9 <sup>th</sup> Graders		10 <sup>th</sup> Graders		11 <sup>th</sup> Graders		12 <sup>th</sup> Graders	
	<u>04-05</u>	<u>07-08</u>	<u>04-05</u>	<u>07-08</u>	<u>04-05</u>	<u>07-08</u>	<u>04-05</u>	<u>07-08</u>
<b>On Way to School</b>	<1%	0%	1%	1%	<1%	4%	2%	<b>7%</b>
<b>During School Hours at school</b>	1%	0%	2%	<1%	<1%	3%	2%	<b>4%</b>
<b>During school hours away from school</b>	<1%	0%	1%	<1%	<1%	5%	6%	8%
<b>Right after school</b>	1%	1%	5%	5%	<b>4%</b>	<b>8%</b>	<b>8%</b>	<b>11%</b>
<b>Before School Events</b>	1%	1%	5%	4%	4%	<b>8%</b>	8%	<b>11%</b>
<b>At School Events</b>	1%	1%	1%	1%	2%	<b>4%</b>	1%	<b>4%</b>
<b>After School Events</b>	<1%	2%	5%	3%	6%	7%	<b>9%</b>	<b>17%</b>
<b>At Parties</b>	7%	3%	13%	13%	24%	18%	25%	28%
<b>At Night with Friends</b>	7%	8%	15%	16%	24%	23%	<b>29%</b>	<b>34%</b>
<b>While Driving Around</b>	0%	1%	3%	5%	<b>4%</b>	<b>8%</b>	<b>14%</b>	<b>15%</b>
<b>At Home (parents knew)</b>	0%	0%	<1%	2%	2%	2%	2%	3%
<b>At Home (parents didn't know)</b>	1%	1%	9%	6%	11%	11%	13%	13%

# Pattern of Drug Use Among Livingston High School Students – 2007/08

	9 <sup>th</sup> Graders	10 <sup>th</sup> Graders	11 <sup>th</sup> Graders	12 <sup>th</sup> Graders
<b>LEVEL I* (High Involvement)</b>				
1. Drug Dependent and Multi-Drug Users	0%	0.8%	3.0%	5.2%
2. Stimulant Users	0%	0.4%	0.9%	1.4%
3. Heavy Marijuana Users	0%	0.8%	1.3%	2.3%
4. Heavy Alcohol Users	0.3%	0.4%	1.7%	4.2%
<b>LEVEL II (Moderate Involvement)</b>				
5. Occasional Drug Users	0.6%	<b>1.2%</b>	1.3%	1.9%
6. Light Marijuana Users	6.7%	<b>12.1%</b>	15.7%	16.4%
<b>LEVEL III (low Involvement)</b>				
7. Tried A Drug (no current use)	3.2%	4.7%	7.8%	7.0%
8. Light Alcohol Users	11.8%	15.6%	17.0%	18.3%
<b>LEVEL IV (No Involvement)</b>				
No Use	77.4%	64.0%	51.3%	43.3%

# Tobacco Use by High School Students 1995 to 2008





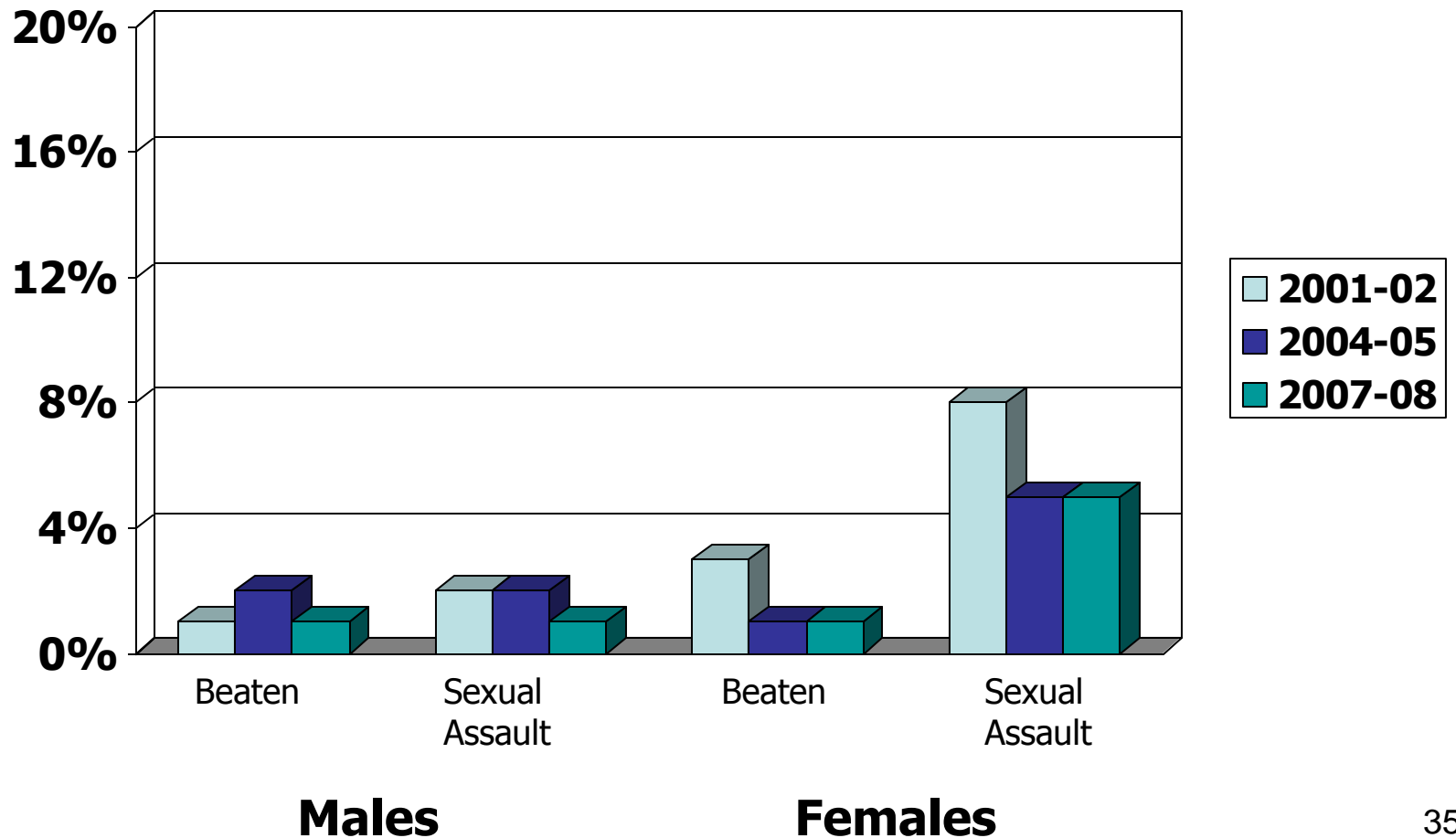
# Admitted Problems of Livingston High School Students From Alcohol

	9 <sup>th</sup> Graders		10 <sup>th</sup> Graders		11 <sup>th</sup> Graders		12 <sup>th</sup> Graders	
	<u>04/05</u>	<u>07/08</u>	<u>04/05</u>	<u>07/08</u>	<u>04/05</u>	<u>07/08</u>	<u>04/05</u>	<u>07/08</u>
<b>Got a Traffic Ticket</b>	0%	0%	0%	0%	<1%	0%	1%	1%
<b>Had a car accident</b>	0%	0%	0%	0%	<1%	0%	1%	1%
<b>Got arrested</b>	<1%	<1%	<1%	0%	1%	<1%	<1%	<b>3%</b>
<b>Had money problems</b>	0%	0%	<1%	<1%	1%	2%	5%	2%
<b>Gotten you in trouble in school</b>	<1%	0%	3%	<1%	<1%	<1%	2%	2%
<b>Hurt your school work</b>	1%	<1%	2%	3%	3%	3%	5%	1%
<b>Fought with other kids</b>	<1%	1%	6%	4%	7%	<b>8%</b>	9%	<b>10%</b>
<b>Fought with your parents</b>	2%	1%	7%	8%	6%	6%	9%	9%
<b>Damaged a friendship</b>	<1%	2%	5%	5%	6%	8%	7%	8%
<b>Passed out</b>	3%	3%	10%	6%	16%	14%	17%	<b>25%</b>
<b>Made you break something</b>	2%	2%	7%	5%	8%	<b>14%</b>	8%	<b>14%</b>
<b>Hurt self</b>	1%	2%	4%	5%	5%	5%	7%	6%
<b>Hurt someone else</b>	<1%	<1%	2%	2%	3%	5%	2%	<b>5%</b>
<b>Couldn't Remember What Happened</b>	7%	8%	19%	16%	24%	20%	31%	<b>34%</b>
<b>Did something sexual &amp; regretted it</b>	2%	<1%	9%	6%	15%	14%	14%	<b>16%</b>

# High Risk Behaviors Among Livingston High School Students

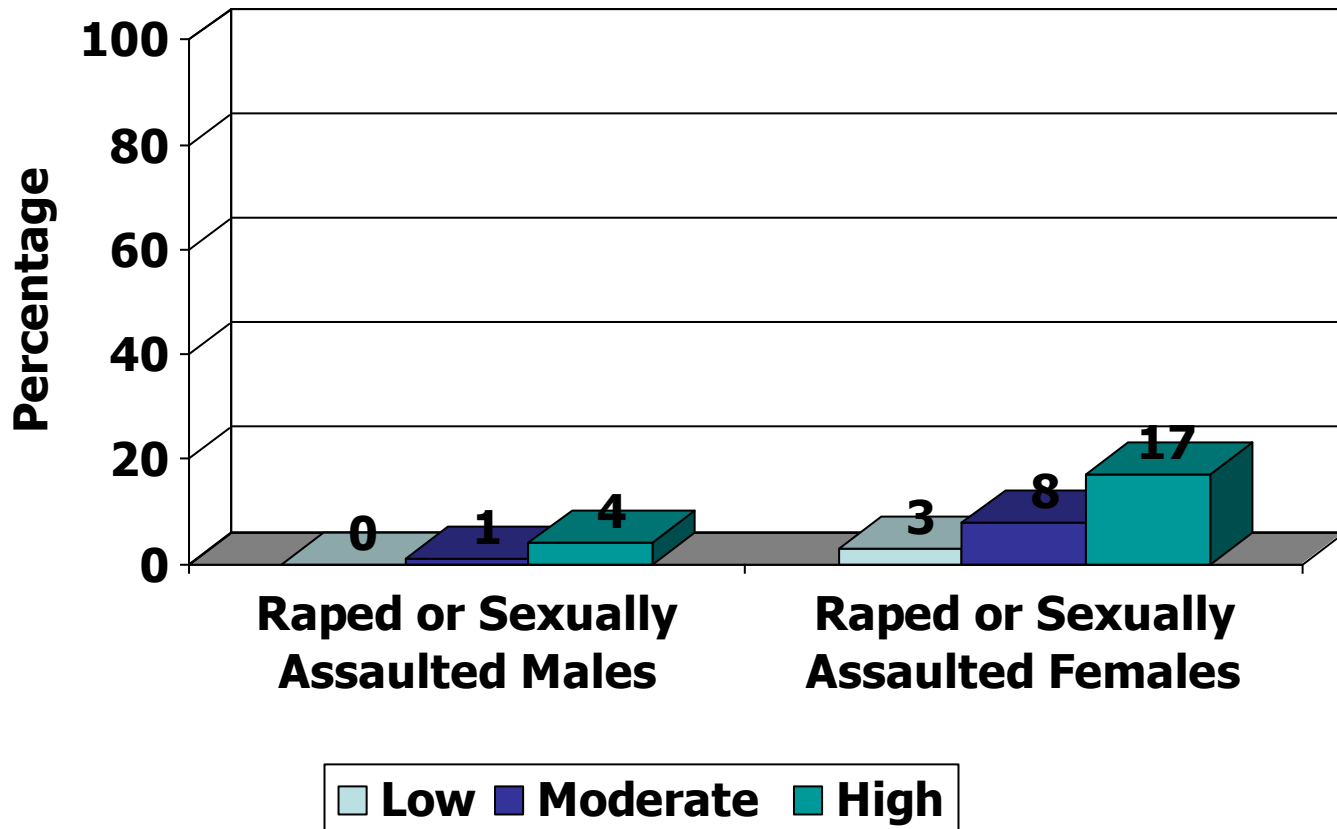
	<b>9<sup>th</sup> Graders</b>		<b>10<sup>th</sup> Graders</b>		<b>11<sup>th</sup> Graders</b>		<b>12<sup>th</sup> Graders</b>	
	<b>04/05</b>	<b>07/08</b>	<b>04/05</b>	<b>07/08</b>	<b>04/05</b>	<b>07/08</b>	<b>04/05</b>	<b>07/08</b>
<b>Daily Alcohol Use</b>	0%	0%	0%	<1%	1%	<1%	0%	1%
<b>Daily Marijuana Use</b>	<1%	0%	0%	<1%	1%	<1%	1%	<b>5%</b>
<b>Passed out while Drinking</b>	3%	3%	10%	6%	16%	14%	17%	<b>25%</b>
<b>Couldn't Remember What Happened</b>	7%	8%	19%	16%	24%	20%	31%	<b>34%</b>
<b>Did something sexual while drinking and regretted it later</b>	2%	<1%	9%	6%	15%	14%	14%	<b>16%</b>
<b>Did something sexual while on drugs And regretted it later</b>	1%	0%	3%	2%	5%	3%	4%	3%
<b>Had a car accident while drinking</b>	0%	0%	0%	0%	<1%	0%	1%	1%
<b>Had a car accident while on drugs</b>	0%	0%	0%	0%	0%	1%	<1%	<1%
<b>Used marijuana and alcohol together</b>	4%	2%	10%	11%	20%	18%	23%	<b>29%</b>
<b>Used a needle to inject a drug</b>	<1%	2%	<1%	0%	<1%	<1%	0%	0%
<b>Shared a needle</b>	<1%	2%	<1%	0%	<1%	0%	0%	0%

# Percent of Livingston High School Students Who Have Been Victims of Dating Violence or Sexual Assault



# Rape or Sexual Assault and Drug Use

Livingston High School 9<sup>th</sup>, 10<sup>th</sup>, 11<sup>th</sup> and 12<sup>th</sup> Grades



Low (no current use) Moderate (occasional users) High (risk for alcohol/drug abuse)

# Percent of LHS Students Who Have Been Hurt, Bullied or Threatened

	Males	Females
Beaten up by someone my age	7%	<1%
Beaten up by someone of another age	13%	3%
Picked on	11%	5%
Bullied	7%	2%
Threatened	10%	5%

All percentages are slightly down with the exception of “threatened”

# Recommendations

- Enhanced parent/community education related to inhalant, prescription drug and alcohol use  
**("Safe Homes", HCHY)**
- Increased coordination between schools and community
- Continued education/awareness related to internet safety and **cyber bullying**
- Increase alignment of K-12 Guidance and Health curricula to address issues of A.T.O.D., violence and victimization (gambling info., ongoing assessment)
- Greater awareness of resources in community

# Recommendations (cont.)

- Greater education about driving while impaired, and consequences of **THC (ie. physical withdrawal)**
- Accurate & up to date information re: A.T.O.D.
- Educating families about “mixed” messages about usage at home, **(Alcohol is above nat. level)**
- Focus during **transition years** (5/6, 6/7 and 8/9) regarding civility, diversity and conflict resolution in addition to greater involvement between 9<sup>th</sup> to 10<sup>th</sup> grade related to A.T.O.D.  
(9<sup>th</sup> grade Health earlier in the year)
- Provide consistent messages regarding athletics in the schools and in the community related to A.T.O.D.

Our children are our greatest resource . . .

We must be vigilant.

We must be believable.

We must work together to protect them.

Many thanks to L.M.A.C. for the Alcohol,  
Tobacco and Other Drugs survey and for  
their continued support.