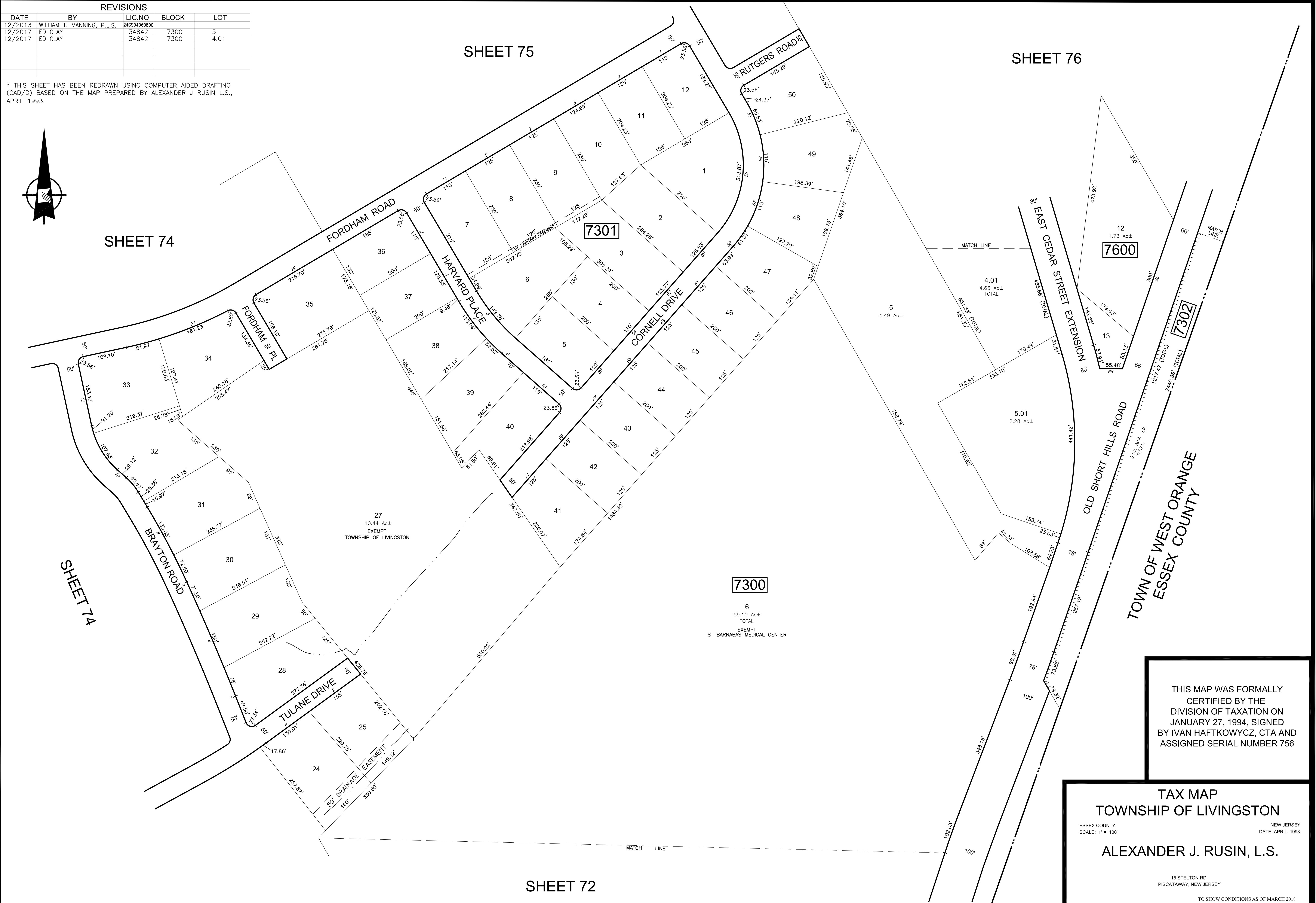
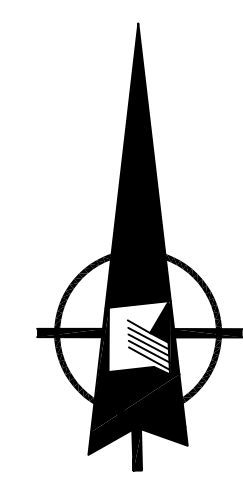


REVISIONS				
DATE	BY	LIC.NO	BLOCK	LOT
12/2013	WILLIAM T. MANNING, P.L.S.	246504060800		
12/2017	ED CLAY	34842	7300	5
12/2017	ED CLAY	34842	7300	4.01

* THIS SHEET HAS BEEN REDRAWN USING COMPUTER AIDED DRAFTING (CAD/D) BASED ON THE MAP PREPARED BY ALEXANDER J. RUSIN L.S., APRIL 1993.



THIS MAP WAS FORMALLY CERTIFIED BY THE DIVISION OF TAXATION ON JANUARY 27, 1994, SIGNED BY IVAN HAFTKOWYCZ, CTA AND ASSIGNED SERIAL NUMBER 756

TAX MAP
TOWNSHIP OF LIVINGSTON
 ESSEX COUNTY NEW JERSEY
 SCALE: 1" = 100' DATE: APRIL, 1993
ALEXANDER J. RUSIN, L.S.
 15 STELTON RD.
 PISCATAWAY, NEW JERSEY
 TO SHOW CONDITIONS AS OF MARCH 2018