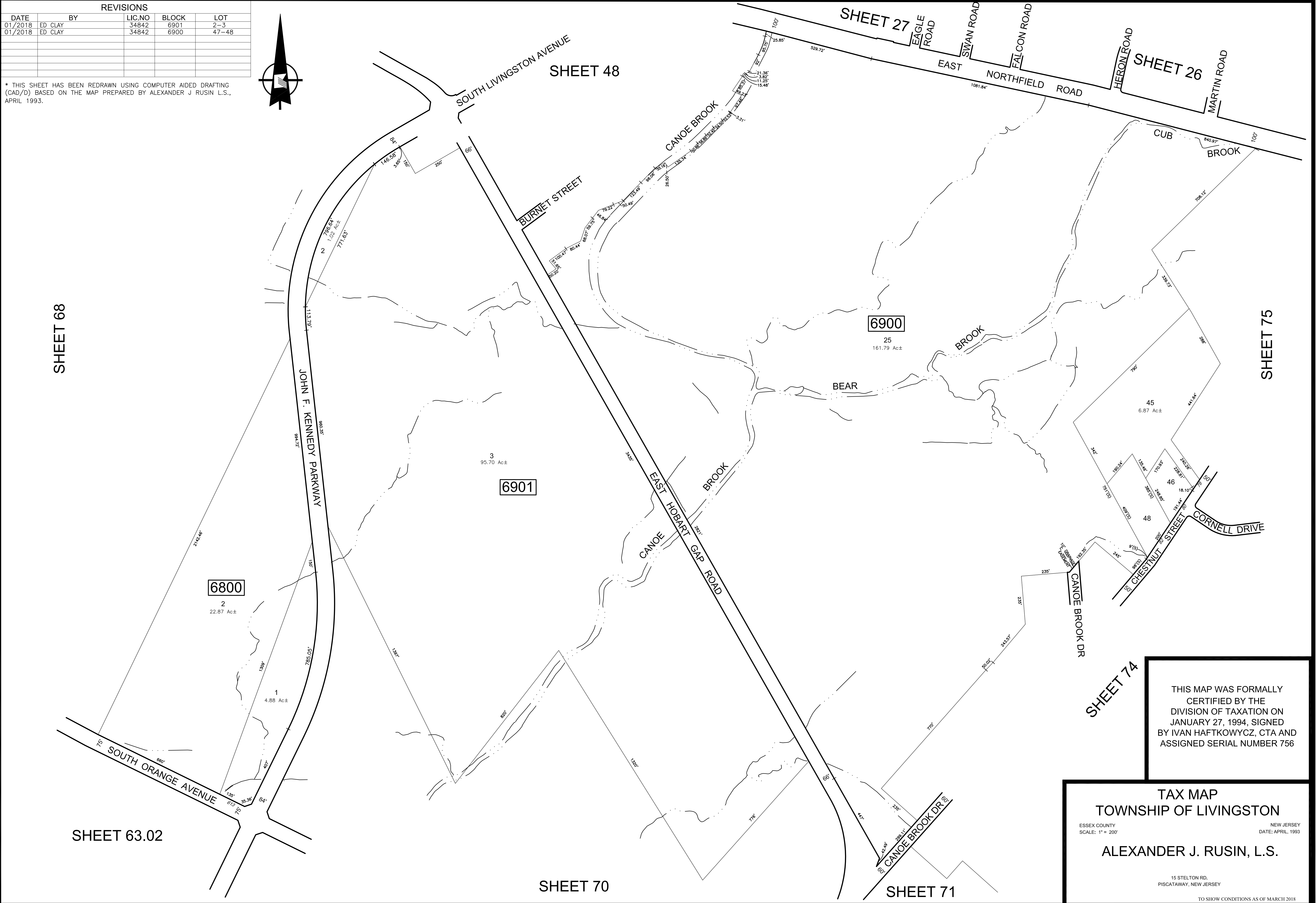


REVISIONS				
DATE	BY	LIC.NO	BLOCK	LOT
01/2018	ED CLAY	34842	6901	2-3
01/2018	ED CLAY	34842	6900	47-48

\* THIS SHEET HAS BEEN REDRAWN USING COMPUTER AIDED DRAFTING (CAD/D) BASED ON THE MAP PREPARED BY ALEXANDER J. RUSIN L.S., APRIL 1993.



THIS MAP WAS FORMALLY CERTIFIED BY THE DIVISION OF TAXATION ON JANUARY 27, 1994, SIGNED BY IVAN HAFTKOWYCZ, CTA AND ASSIGNED SERIAL NUMBER 756

**TAX MAP**  
**TOWNSHIP OF LIVINGSTON**  
 ESSEX COUNTY NEW JERSEY  
 SCALE: 1" = 200' DATE: APRIL, 1993  
**ALEXANDER J. RUSIN, L.S.**  
 15 STELTON RD.  
 PISCATAWAY, NEW JERSEY  
 TO SHOW CONDITIONS AS OF MARCH 2018