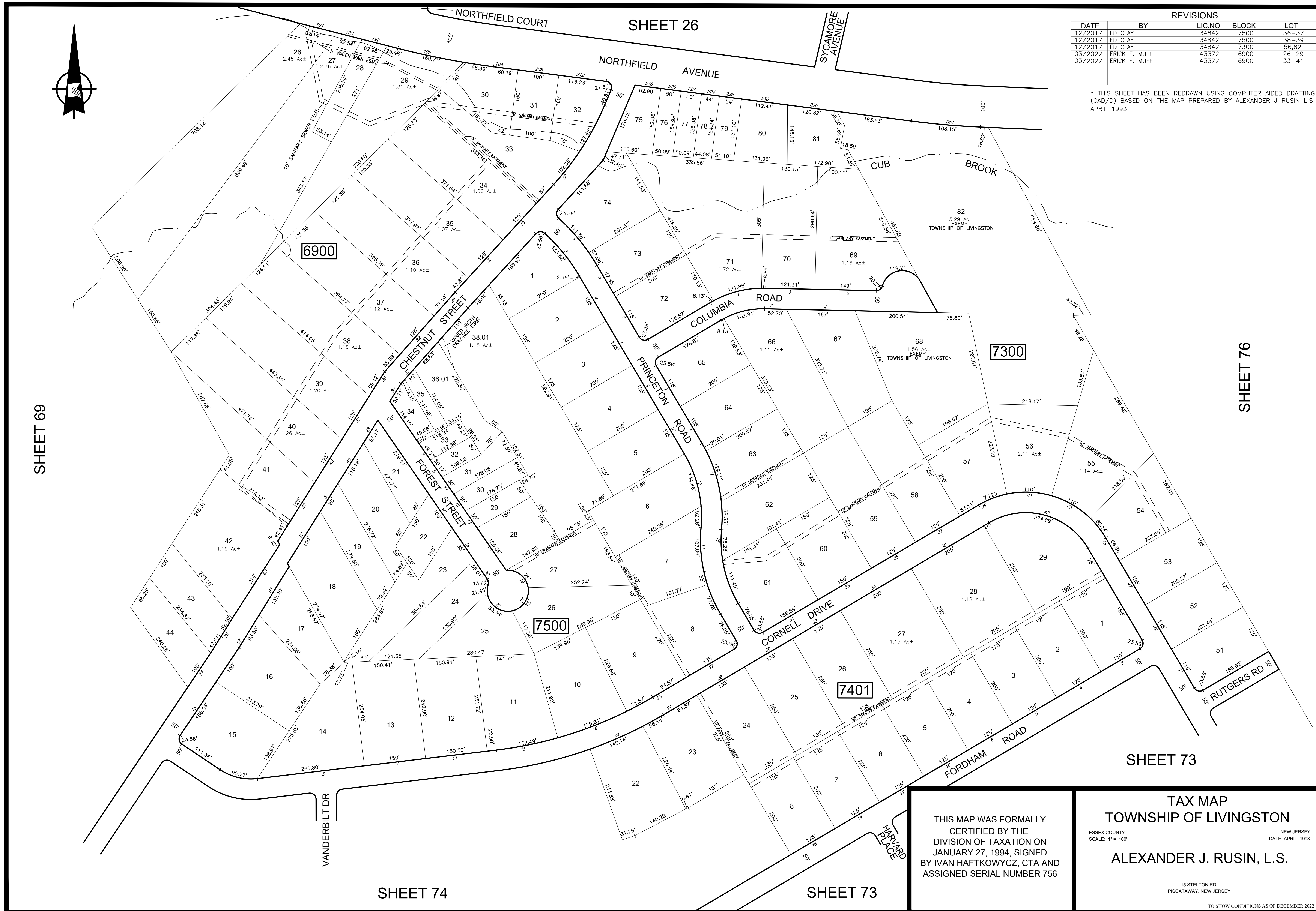
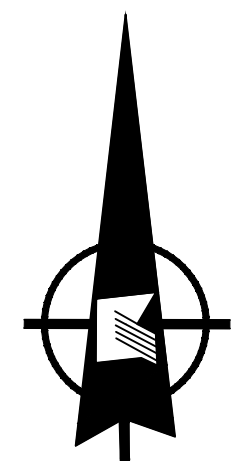


REVISIONS				
DATE	BY	LIC.NO	BLOCK	LOT
12/2017	ED CLAY	34842	7500	36-37
12/2017	ED CLAY	34842	7500	38-39
12/2017	ED CLAY	34842	7300	56,82
03/2022	ERICK E. MUFF	43372	6900	26-29
03/2022	ERICK E. MUFF	43372	6900	33-41

* THIS SHEET HAS BEEN REDRAWN USING COMPUTER AIDED DRAFTING (CAD/D) BASED ON THE MAP PREPARED BY ALEXANDER J RUSIN L.S., APRIL 1993.



THIS MAP WAS FORMALLY CERTIFIED BY THE DIVISION OF TAXATION ON JANUARY 27, 1994, SIGNED BY IVAN HAFTKOWYCZ, CTA AND ASSIGNED SERIAL NUMBER 756

TAX MAP
TOWNSHIP OF LIVINGSTON
ESSEX COUNTY NEW JERSEY
SCALE: 1" = 100' DATE: APRIL, 1993
ALEXANDER J. RUSIN, L.S.
15 STELTON RD.
PISCATAWAY, NEW JERSEY
TO SHOW CONDITIONS AS OF DECEMBER 2022