

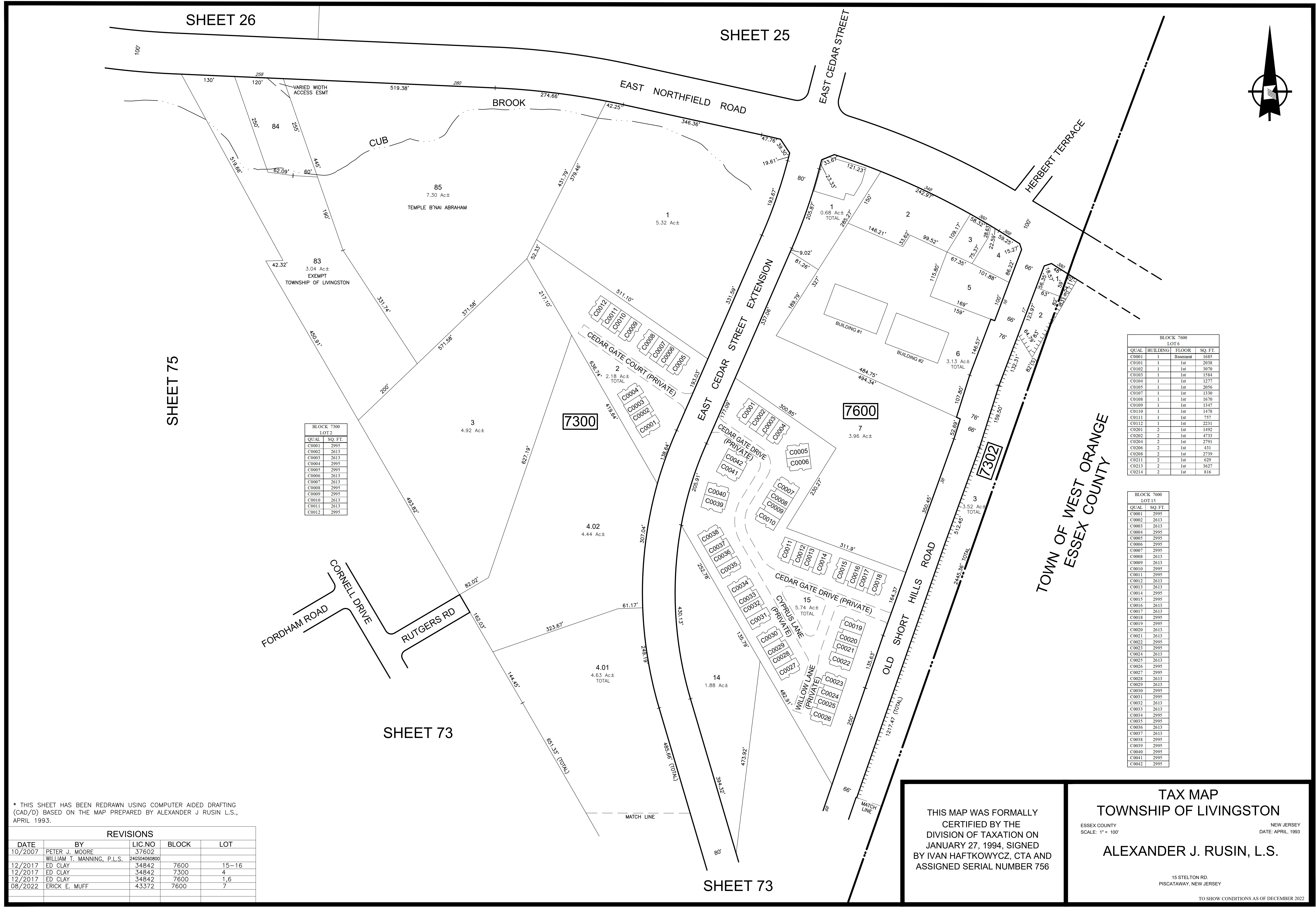
SHEET 26

SHEET 25

SHEET 75

SHEET 73

SHEET 73



BLOCK 7300  
LOT 2

QUAL	SQ. FT.
C0001	2995
C0002	2613
C0003	2613
C0004	2995
C0005	2995
C0006	2613
C0007	2613
C0008	2995
C0009	2995
C0010	2613
C0011	2613
C0012	2995

BLOCK 7600  
LOT 6

QUAL	BUILDING	FLOOR	SQ. FT.
C0101	1	Basement	1885
C0101	1	1st	2038
C0102	1	1st	3070
C0103	1	1st	1584
C0104	1	1st	1277
C0105	1	1st	2056
C0107	1	1st	1330
C0108	1	1st	1670
C0109	1	1st	1347
C0110	1	1st	1478
C0111	1	1st	757
C0112	1	1st	2231
C0201	2	1st	1492
C0202	2	1st	4733
C0204	2	1st	2791
C0205	2	1st	431
C0208	2	1st	2739
C0211	2	1st	629
C0213	2	1st	3627
C0214	2	1st	816

BLOCK 7600  
LOT 15

QUAL	SQ. FT.
C0001	2995
C0002	2613
C0003	2613
C0004	2995
C0005	2995
C0006	2995
C0007	2995
C0008	2613
C0009	2613
C0010	2995
C0011	2995
C0012	2613
C0013	2613
C0014	2995
C0015	2995
C0016	2613
C0017	2613
C0018	2995
C0019	2995
C0020	2613
C0021	2613
C0022	2995
C0023	2995
C0024	2613
C0025	2613
C0026	2995
C0027	2995
C0028	2613
C0029	2613
C0030	2995
C0031	2995
C0032	2613
C0033	2613
C0034	2995
C0035	2995
C0036	2613
C0037	2613
C0038	2995
C0039	2995
C0040	2995
C0041	2995
C0042	2995

\* THIS SHEET HAS BEEN REDRAWN USING COMPUTER AIDED DRAFTING (CAD/D) BASED ON THE MAP PREPARED BY ALEXANDER J RUSIN L.S., APRIL 1993.

REVISIONS				
DATE	BY	LIC.NO	BLOCK	LOT
10/2007	PETER J. MOORE	37602		
	WILLIAM T. MANNING, P.L.S.	24650406800		
12/2017	ED CLAY	34842	7600	15-16
12/2017	ED CLAY	34842	7300	4
12/2017	ED CLAY	34842	7600	1,6
08/2022	ERICK E. MUFF	43372	7600	7

THIS MAP WAS FORMALLY CERTIFIED BY THE DIVISION OF TAXATION ON JANUARY 27, 1994, SIGNED BY IVAN HAFTKOWYCZ, CTA AND ASSIGNED SERIAL NUMBER 756

TAX MAP  
TOWNSHIP OF LIVINGSTON  
ESSEX COUNTY  
SCALE: 1" = 100'  
NEW JERSEY  
DATE: APRIL, 1993  
ALEXANDER J. RUSIN, L.S.  
15 STELTON RD.  
PISCATAWAY, NEW JERSEY  
TO SHOW CONDITIONS AS OF DECEMBER 2022