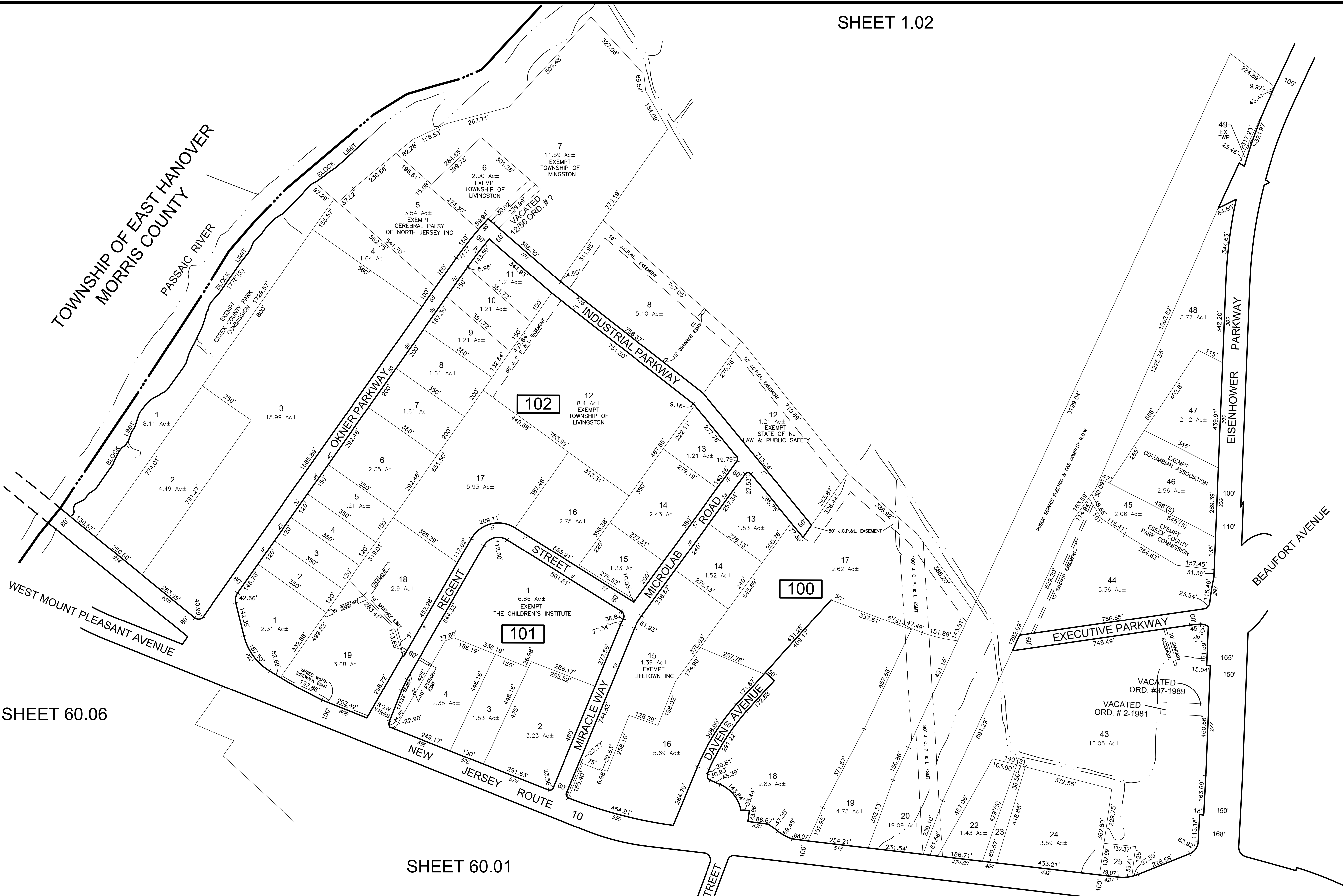


TOWNSHIP OF EAST HANOVER
MORRIS COUNTY

PASSAIC RIVER



SHEET 60.06

SHEET 60.01

SHEET 59

SHEET 1.02

SHEET 6

* THIS SHEET HAS BEEN REDRAWN USING COMPUTER AIDED DRAFTING (CAD/D) BASED ON THE MAP PREPARED BY ALEXANDER J. RUSIN L.S., APRIL 1993.

REVISIONS				
DATE	BY	LIC. NO.	BLOCK	LOT
4/2008	PETER J. MOORE	37602		
12/2013	WILLIAM T. MANNING, P.L.S.	246504068000		
08/2012	ED CLAY	34842	100	8-11
03/2022	ERICK E. MUFF	34842		Add Miracle Way
03/2022	ERICK E. MUFF	34842	100	18, R.O.W. Taking

THIS MAP WAS FORMALLY CERTIFIED BY THE DIVISION OF TAXATION ON JANUARY 27, 1994, SIGNED BY IVAN HAFTKOWYCZ, CTA AND ASSIGNED SERIAL NUMBER 756

TAX MAP
TOWNSHIP OF LIVINGSTON
ESSEX COUNTY SCALE: 1" = 200'
NEW JERSEY DATE: APRIL, 1993
ALEXANDER J. RUSIN, L.S.
15 STELTON RD.
PISCATAWAY, NEW JERSEY
TO SHOW CONDITIONS AS OF DECEMBER 2022