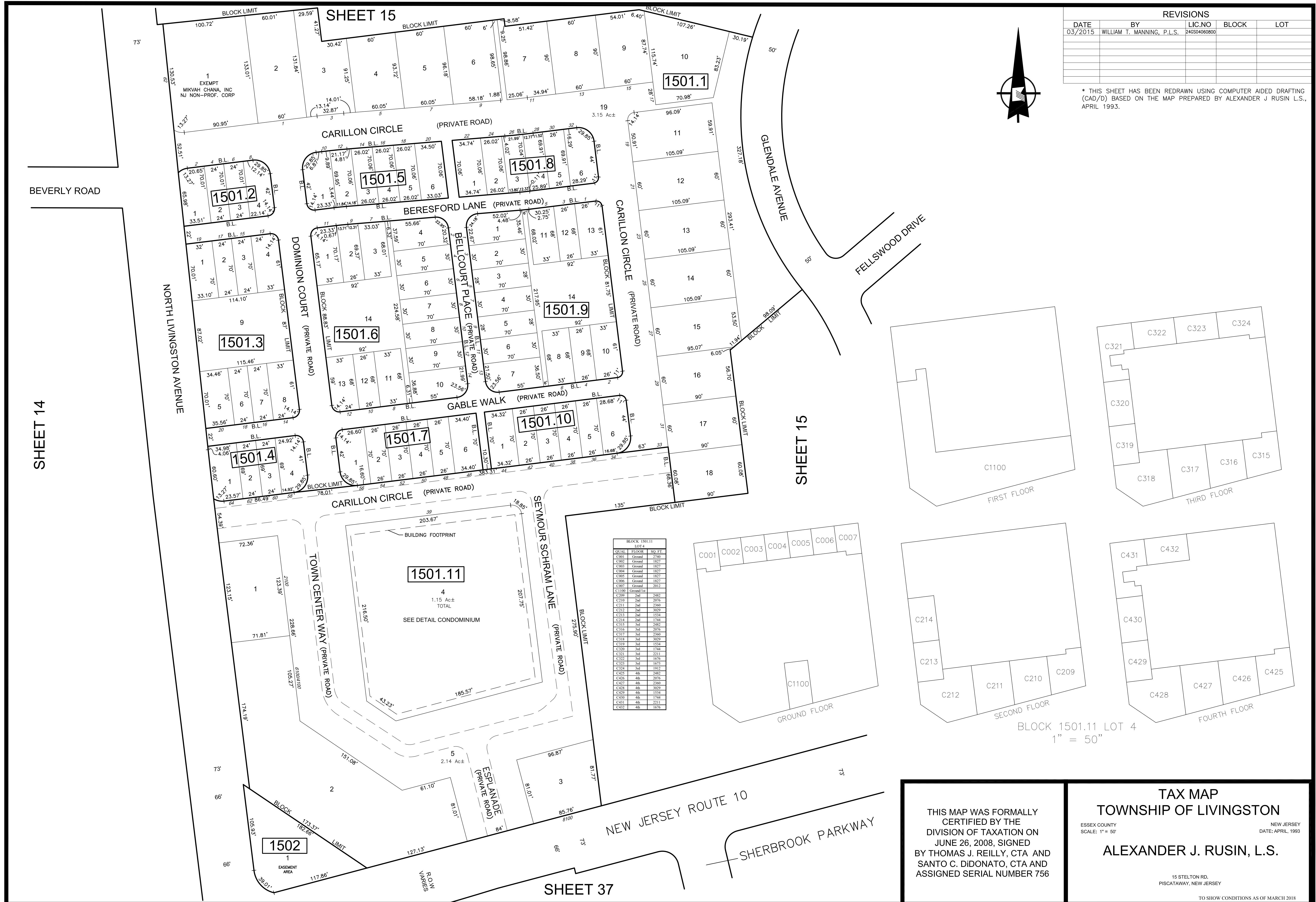
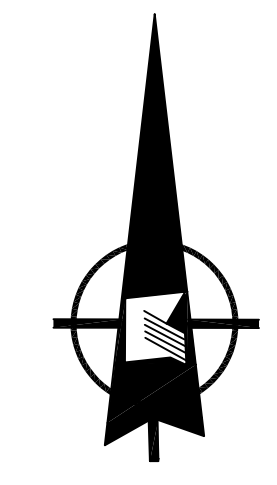
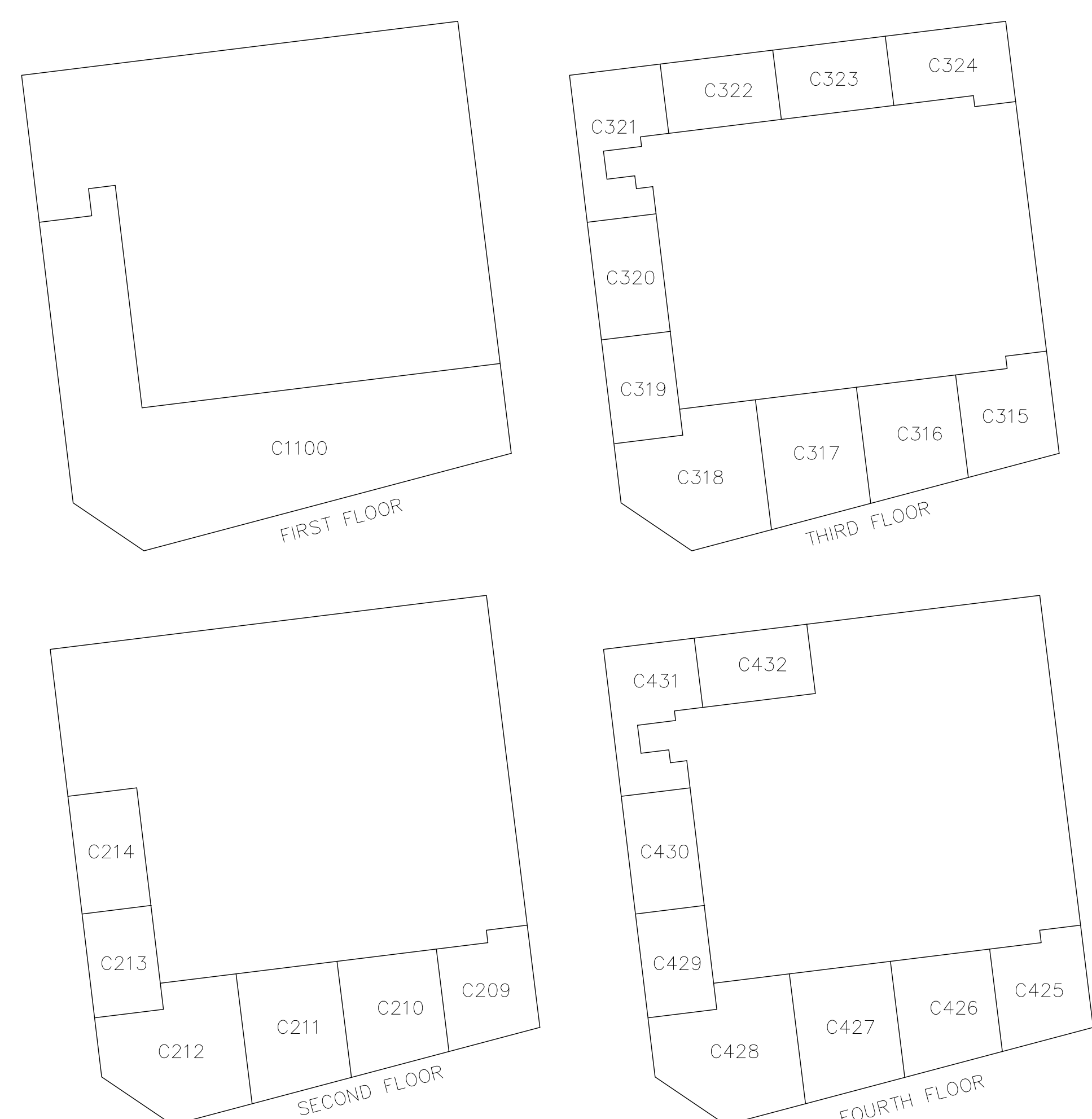


REVISIONS				
DATE	BY	LIC.NO	BLOCK	LOT
03/2015	WILLIAM T. MANNING, P.L.S.	246504060800		

* THIS SHEET HAS BEEN REDRAWN USING COMPUTER AIDED DRAFTING (CAD/D) BASED ON THE MAP PREPARED BY ALEXANDER J. RUSIN L.S., APRIL 1993.



BLOCK	FLOOR	SQ. FT.
C001	Ground	2740
C002	Ground	1827
C003	Ground	1827
C004	Ground	1827
C005	Ground	1827
C006	Ground	1827
C007	Ground	2012
C1100	Ground	2012
C209	2nd	2482
C210	2nd	2076
C211	2nd	2369
C212	2nd	3029
C213	2nd	1534
C214	2nd	1744
C215	2nd	2482
C216	2nd	2076
C217	2nd	2369
C218	2nd	3029
C219	2nd	1534
C220	2nd	1744
C221	2nd	2482
C222	2nd	1676
C223	2nd	1827
C224	2nd	1912
C225	4th	2482
C226	4th	2076
C227	4th	2369
C228	4th	3029
C229	4th	1534
C230	4th	1744
C231	4th	2482
C232	4th	1676



BLOCK 1501.11 LOT 4
1" = 50"

THIS MAP WAS FORMALLY CERTIFIED BY THE DIVISION OF TAXATION ON JUNE 26, 2008, SIGNED BY THOMAS J. REILLY, CTA AND SANTO C. DIDONATO, CTA AND ASSIGNED SERIAL NUMBER 756

TAX MAP
TOWNSHIP OF LIVINGSTON
ESSEX COUNTY
SCALE: 1" = 50'
NEW JERSEY
DATE: APRIL, 1993
ALEXANDER J. RUSIN, L.S.
15 STELTON RD.
PISCATAWAY, NEW JERSEY
TO SHOW CONDITIONS AS OF MARCH 2018