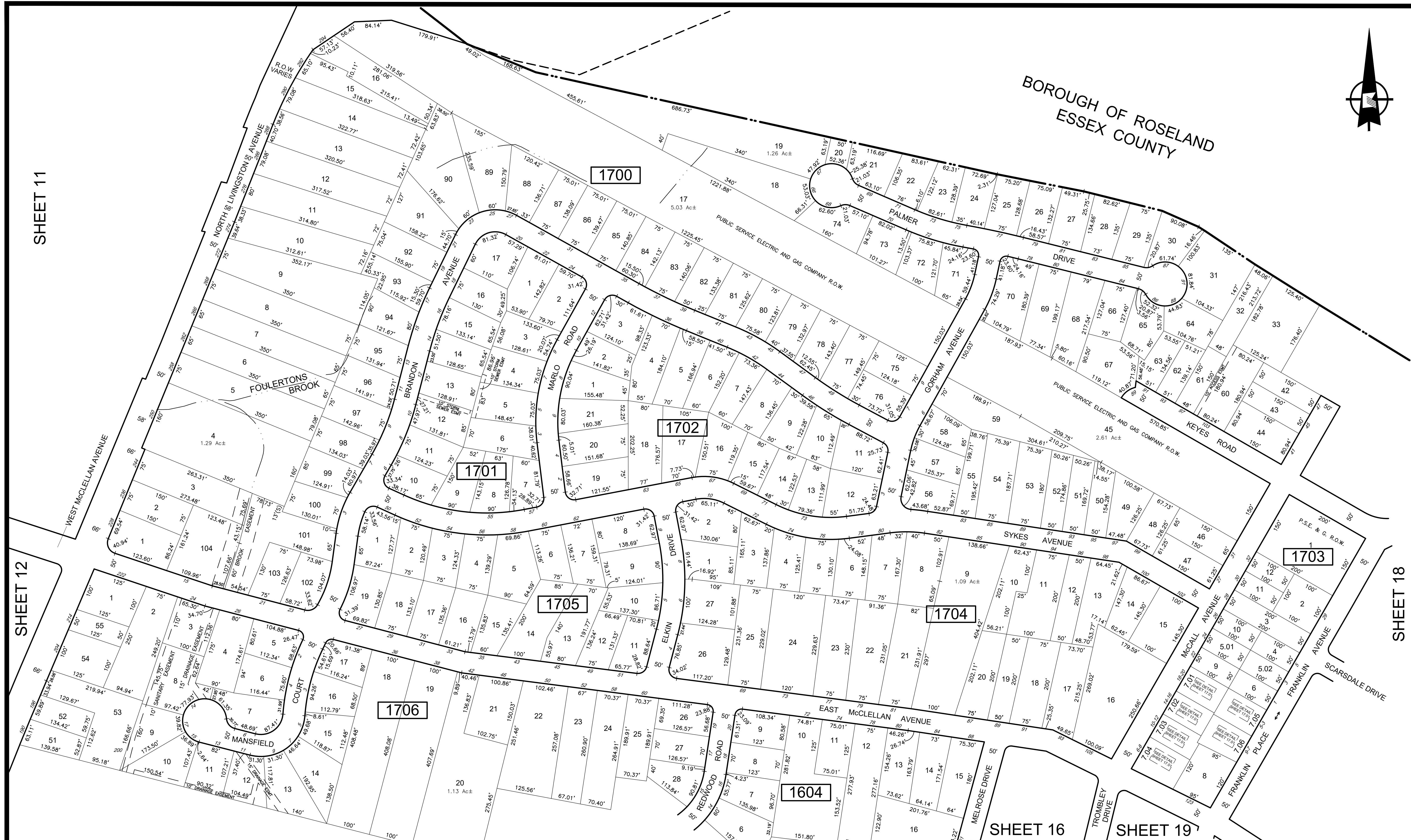


BOROUGH OF ROSELAND  
ESSEX COUNTY



SHEET 11

SHEET 12

SHEET 18

\* THIS SHEET HAS BEEN REDRAWN USING COMPUTER AIDED DRAFTING (CAD/D) BASED ON THE MAP PREPARED BY ALEXANDER J. RUSIN, L.S., APRIL 1993.

REVISIONS				
DATE	BY	LIC.NO	BLOCK	LOT
12/2017	ED CLAY	34842	1700	60
12/2017	ED CLAY	34842	1703	7
01/2018	ED CLAY	34842	1700	101.01-101.02
12/2019	ED CLAY	34842	1703	7.02
02/2020	ED CLAY	34842	1703	7.01,7.03-7.06
03/2022	ERICK E. MUFF	43372	1701	4-5,12

SHEET 16

THIS MAP WAS FORMALLY CERTIFIED BY THE DIVISION OF TAXATION ON JANUARY 27, 1994, SIGNED BY IVAN HAFTKOWYCZ, CTA AND ASSIGNED SERIAL NUMBER 756

TAX MAP  
TOWNSHIP OF LIVINGSTON  
ESSEX COUNTY  
SCALE: 1" = 100'  
NEW JERSEY  
DATE: APRIL, 1993  
ALEXANDER J. RUSIN, L.S.

15 STELTON RD.  
PISCATAWAY, NEW JERSEY

TO SHOW CONDITIONS AS OF DECEMBER 2022