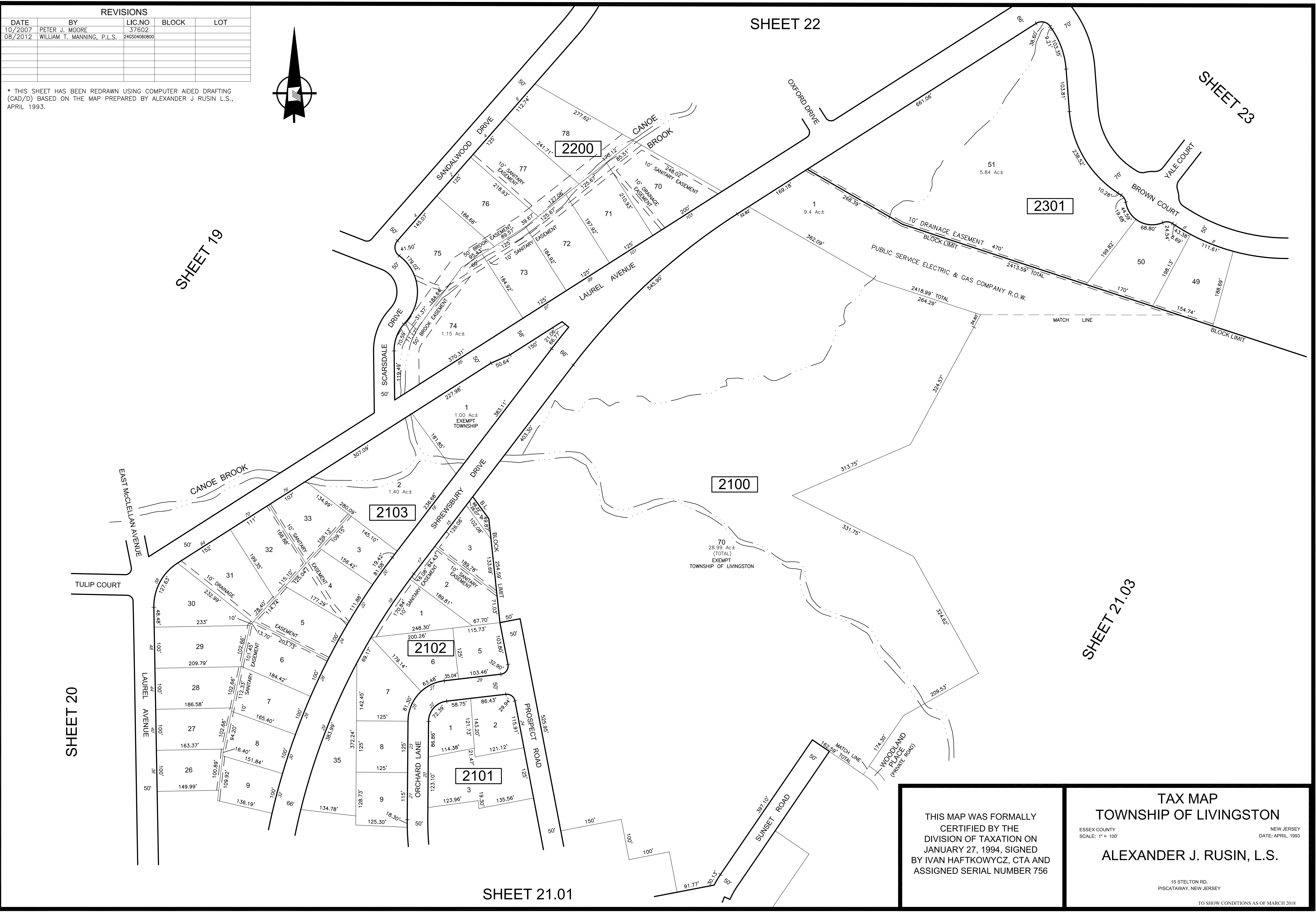
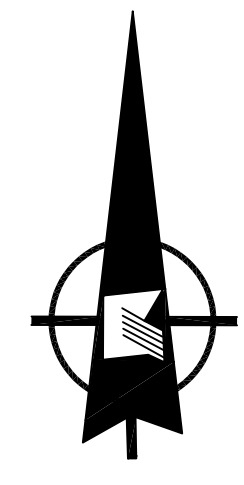


REVISIONS				
DATE	BY	LIC.NO	BLOCK	LOT
10/2007	PETER J. MOORE	37602		
08/2012	WILLIAM T. MANNING, P.L.S.	246504060800		

* THIS SHEET HAS BEEN REDRAWN USING COMPUTER AIDED DRAFTING (CAD/D) BASED ON THE MAP PREPARED BY ALEXANDER J RUSIN L.S., APRIL 1993.



SHEET 20

SHEET 19

SHEET 22

SHEET 23

SHEET 21.03

SHEET 21.01

THIS MAP WAS FORMALLY CERTIFIED BY THE DIVISION OF TAXATION ON JANUARY 27, 1994, SIGNED BY IVAN HAFTKOWYCZ, CTA AND ASSIGNED SERIAL NUMBER 756

TAX MAP
TOWNSHIP OF LIVINGSTON
ESSEX COUNTY
SCALE: 1" = 100'
NEW JERSEY
DATE: APRIL, 1993
ALEXANDER J. RUSIN, L.S.

15 STELTON RD.
PISCATAWAY, NEW JERSEY

TO SHOW CONDITIONS AS OF MARCH 2018