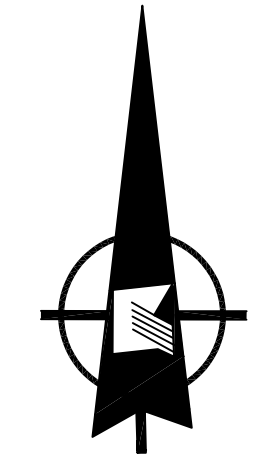


REVISIONS				
DATE	BY	LIC.NO	BLOCK	LOT

* THIS SHEET HAS BEEN REDRAWN USING COMPUTER AIDED DRAFTING (CAD/D) BASED ON THE MAP PREPARED BY ALEXANDER J RUSIN L.S., APRIL 1993.



BOROUGH OF ROSELAND
ESSEX COUNTY

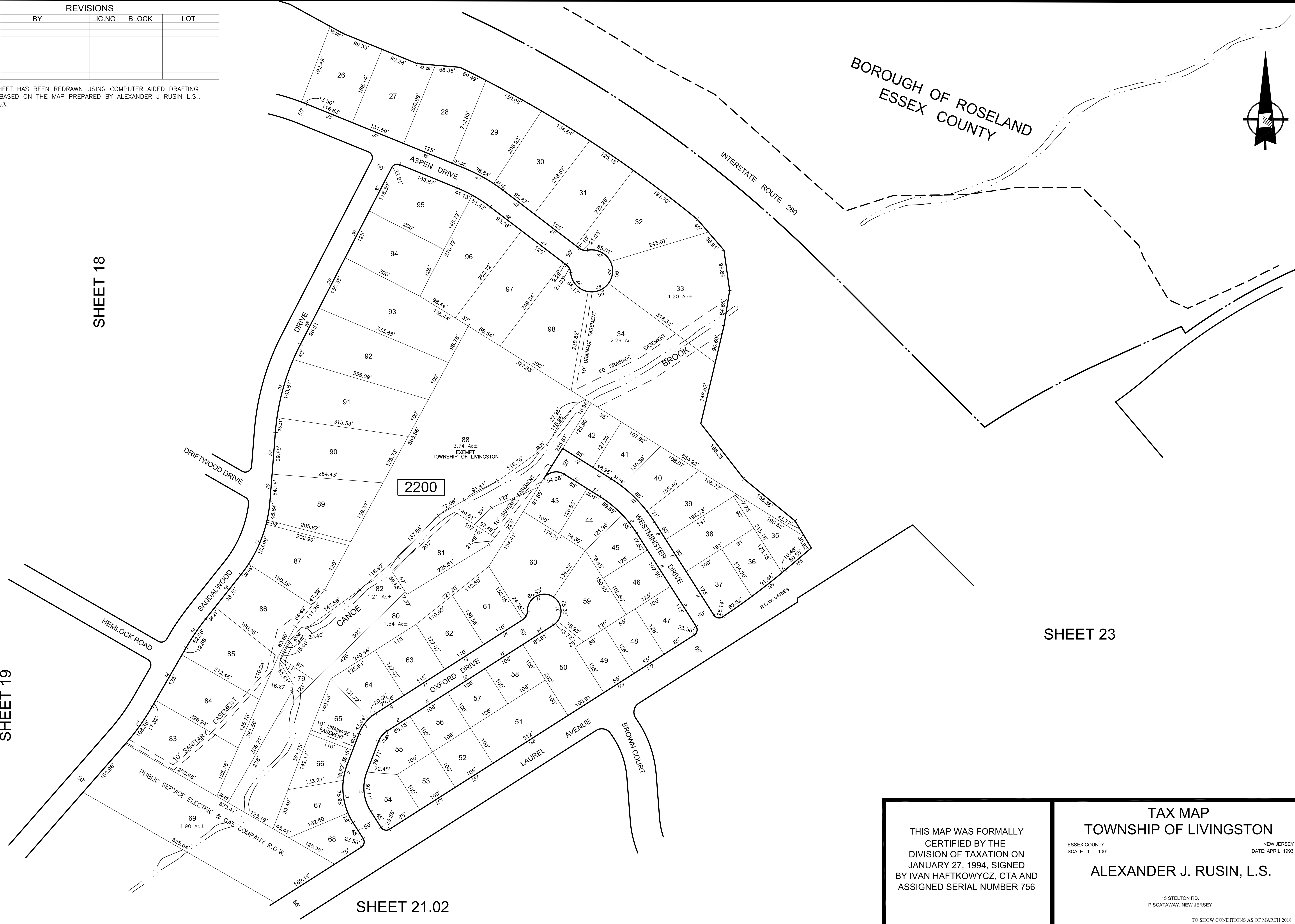
INTERSTATE ROUTE 280

SHEET 18

SHEET 23

SHEET 19

SHEET 21.02



2200

88
3.74 Ac±
EXEMPT
TOWNSHIP OF LIVINGSTON

THIS MAP WAS FORMALLY
CERTIFIED BY THE
DIVISION OF TAXATION ON
JANUARY 27, 1994, SIGNED
BY IVAN HAFTKOWYCZ, CTA AND
ASSIGNED SERIAL NUMBER 756

TAX MAP
TOWNSHIP OF LIVINGSTON
ESSEX COUNTY
SCALE: 1" = 100'
NEW JERSEY
DATE: APRIL, 1993
ALEXANDER J. RUSIN, L.S.

15 STELTON RD.
PISCATAWAY, NEW JERSEY

TO SHOW CONDITIONS AS OF MARCH 2018