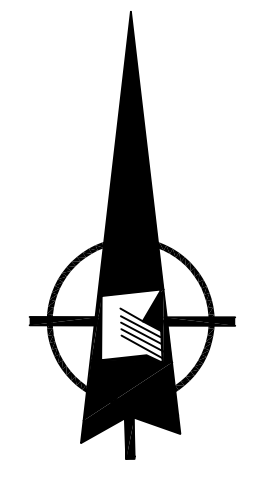


REVISIONS				
DATE	BY	LIC.NO	BLOCK	LOT
10/2007	PETER J. MOORE	37602		
12/2013	WILLIAM T. MANNING, P.L.S.	246S04060800		

* THIS SHEET HAS BEEN REDRAWN USING COMPUTER AIDED DRAFTING (CAD/D) BASED ON THE MAP PREPARED BY ALEXANDER J. RUSIN L.S., APRIL 1993.



BOROUGH OF ROSELAND
ESSEX COUNTY

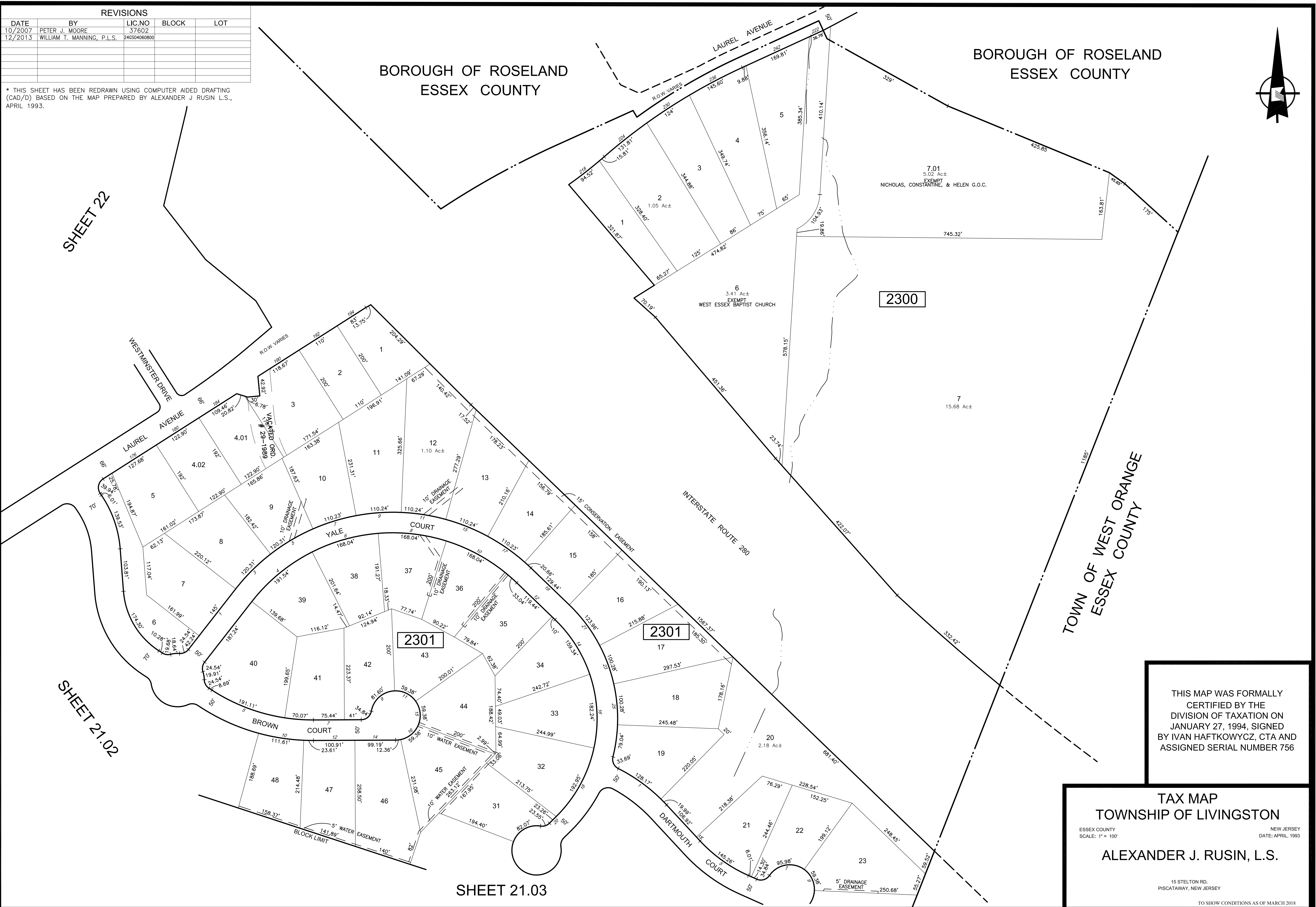
BOROUGH OF ROSELAND
ESSEX COUNTY

SHEET 22

SHEET 21.02

SHEET 21.03

TOWN OF WEST ORANGE
ESSEX COUNTY



2300

2301

2301

THIS MAP WAS FORMALLY
CERTIFIED BY THE
DIVISION OF TAXATION ON
JANUARY 27, 1994, SIGNED
BY IVAN HAFTKOWYCZ, CTA AND
ASSIGNED SERIAL NUMBER 756

TAX MAP
TOWNSHIP OF LIVINGSTON

ESSEX COUNTY NEW JERSEY
SCALE: 1" = 100' DATE: APRIL, 1993

ALEXANDER J. RUSIN, L.S.

15 STELTON RD.
PISCATAWAY, NEW JERSEY

TO SHOW CONDITIONS AS OF MARCH 2018