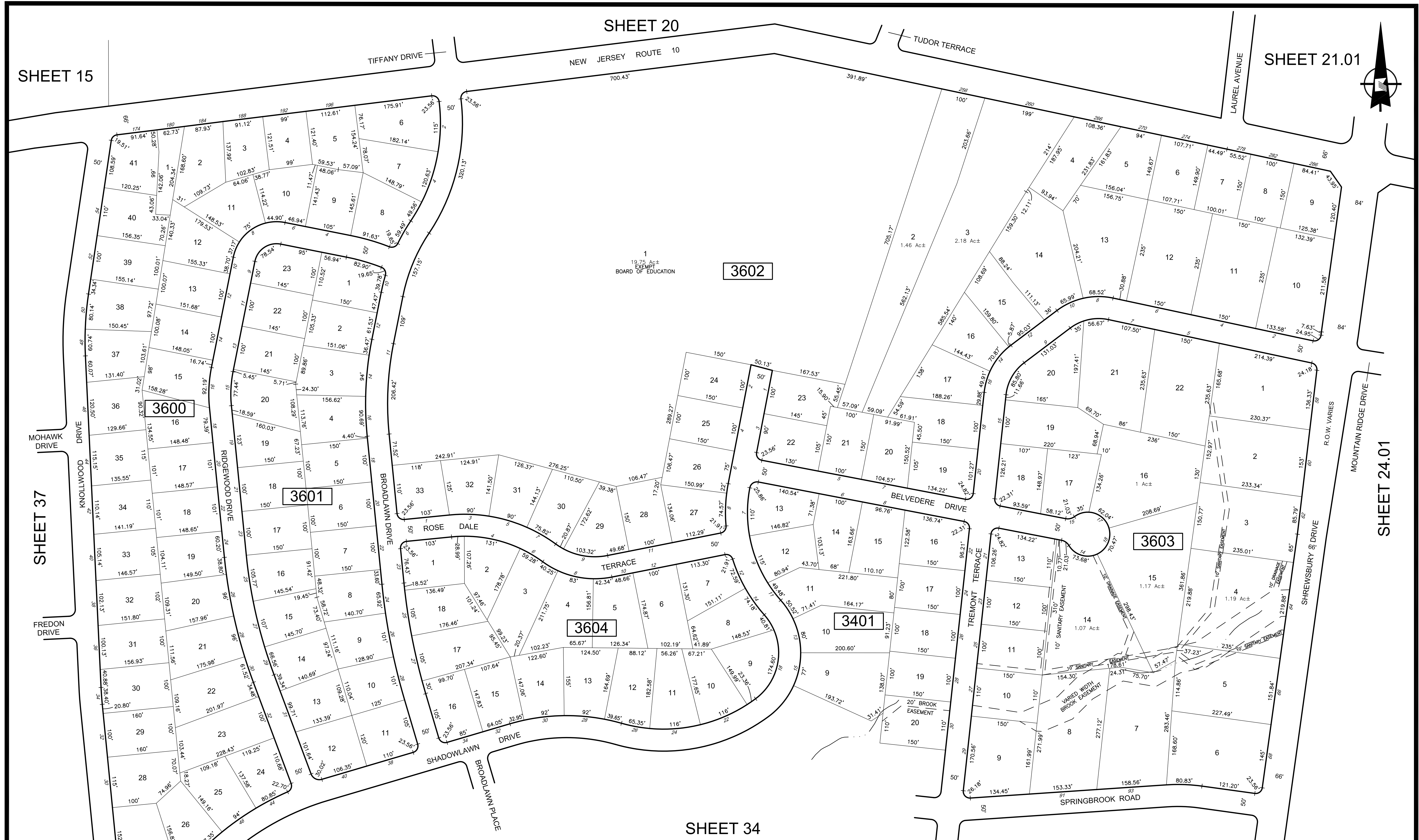
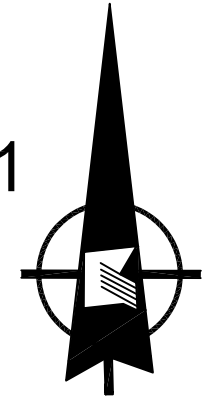


SHEET 20

SHEET 15

SHEET 21.01



SHEET 34

SHEET 24.01

* THIS SHEET HAS BEEN REDRAWN USING COMPUTER AIDED DRAFTING (CAD/D) BASED ON THE MAP PREPARED BY ALEXANDER J. RUSIN L.S., APRIL 1993.

REVISIONS				
DATE	BY	LIC.NO	BLOCK	LOT

THIS MAP WAS FORMALLY CERTIFIED BY THE DIVISION OF TAXATION ON JANUARY 27, 1994, SIGNED BY IVAN HAFTKOWYCZ, CTA AND ASSIGNED SERIAL NUMBER 756

TAX MAP
TOWNSHIP OF LIVINGSTON
 ESSEX COUNTY NEW JERSEY
 SCALE: 1" = 100' DATE: APRIL, 1993
ALEXANDER J. RUSIN, L.S.
 15 STELTON RD.
 PISCATAWAY, NEW JERSEY
 TO SHOW CONDITIONS AS OF MARCH 2018