

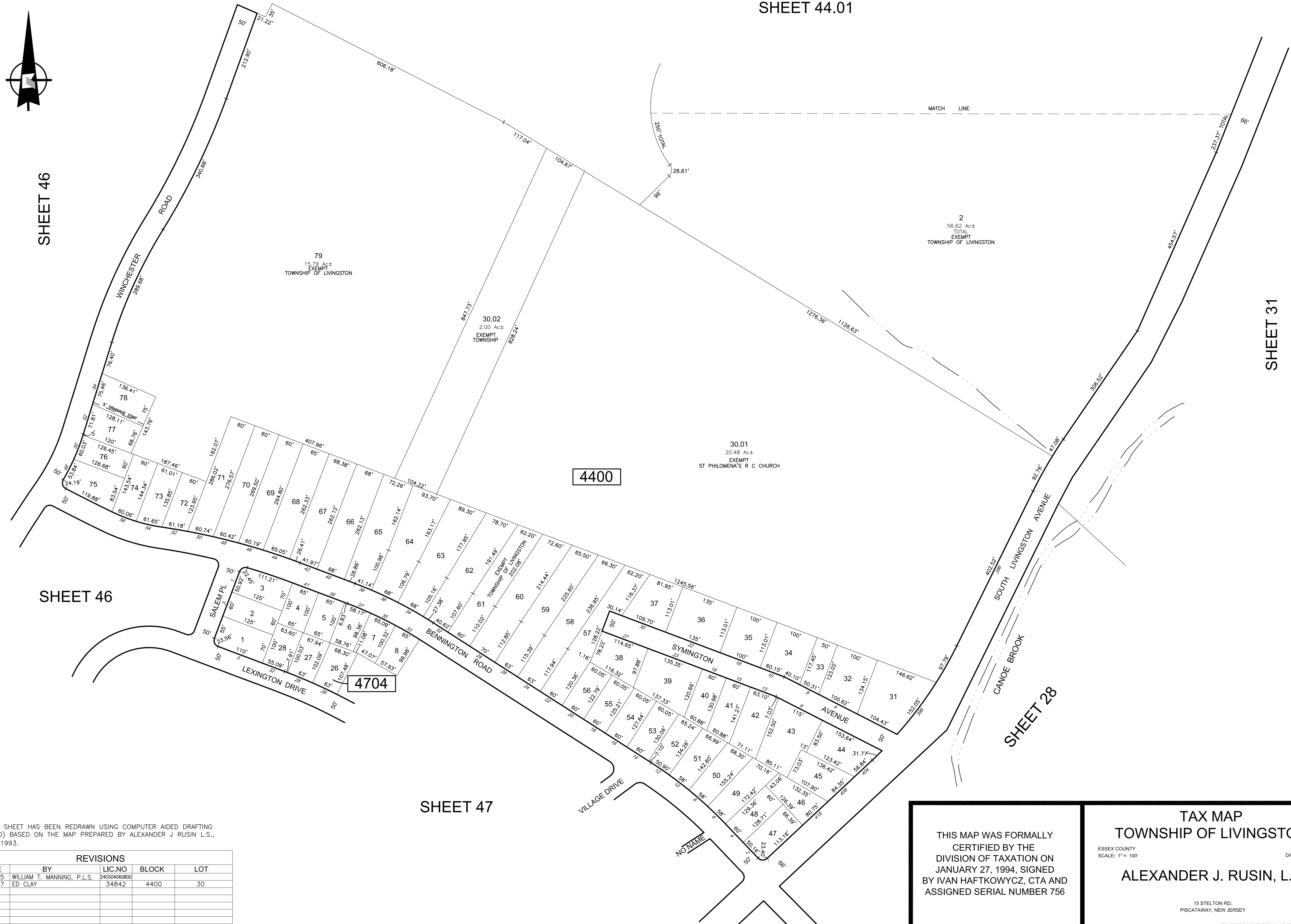
SHEET 46

SHEET 31

SHEET 46

SHEET 47

SHEET 28



* THIS SHEET HAS BEEN REDRAWN USING COMPUTER AIDED DRAFTING (CAD/D) BASED ON THE MAP PREPARED BY ALEXANDER J RUSIN L.S., APRIL 1993.

REVISIONS				
DATE	BY	LIC.NO	BLOCK	LOT
03/2015	WILLIAM T. MANNING, P.L.S.	246S04060800	4400	30
12/2017	ED CLAY	34842	4400	30

4400

4704

THIS MAP WAS FORMALLY CERTIFIED BY THE DIVISION OF TAXATION ON JANUARY 27, 1994, SIGNED BY IVAN HAFTKOWYCZ, CTA AND ASSIGNED SERIAL NUMBER 756

TAX MAP TOWNSHIP OF LIVINGSTON ESSEX COUNTY SCALE: 1" = 100' NEW JERSEY DATE: APRIL, 1993 ALEXANDER J. RUSIN, L.S.

15 STELTON RD. PISCATAWAY, NEW JERSEY

TO SHOW CONDITIONS AS OF MARCH 2018