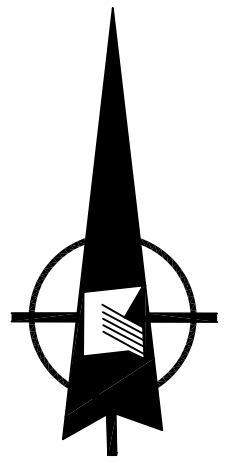


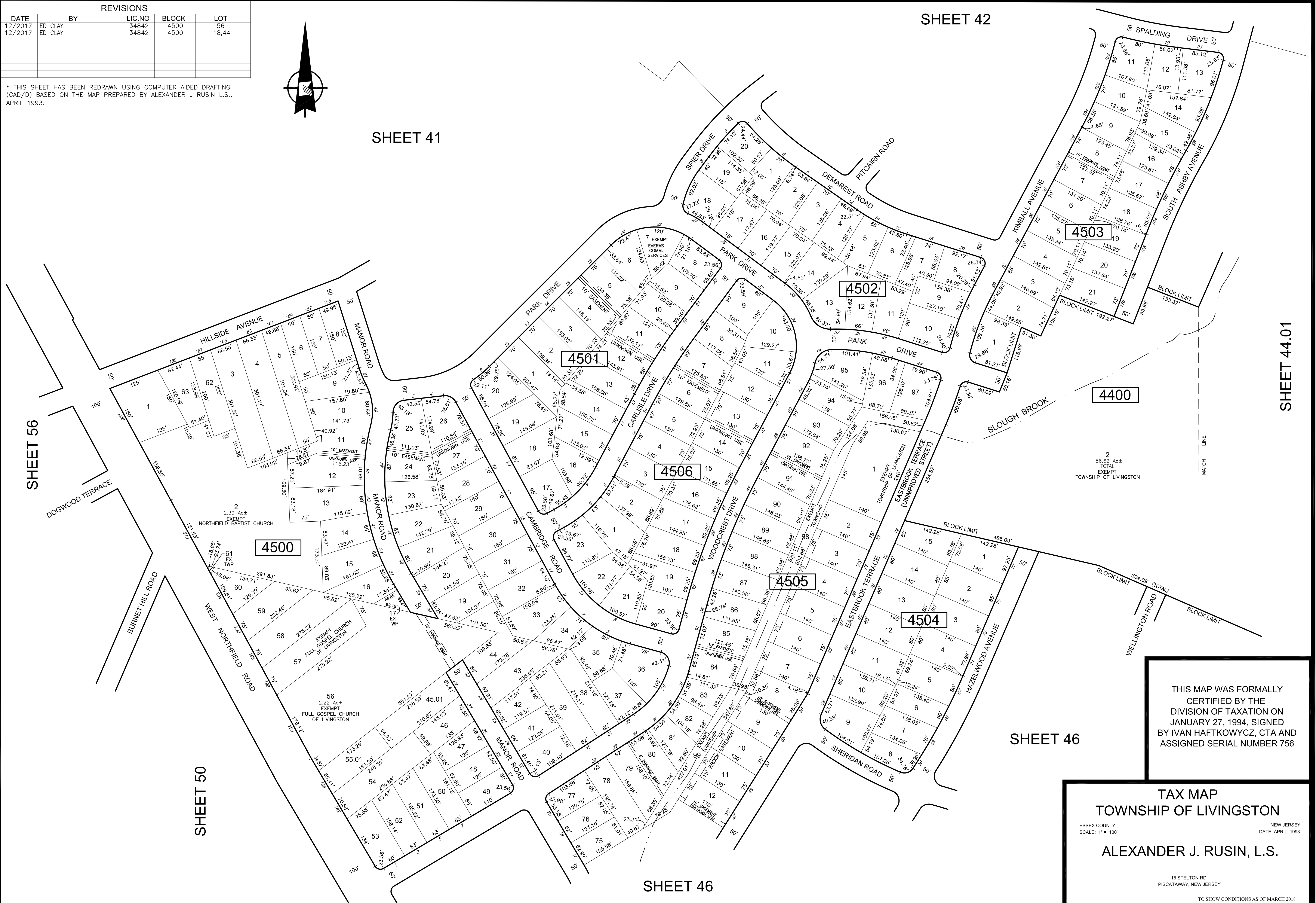
REVISIONS				
DATE	BY	LIC.NO	BLOCK	LOT
12/2017	ED CLAY	34842	4500	56
12/2017	ED CLAY	34842	4500	18,44

* THIS SHEET HAS BEEN REDRAWN USING COMPUTER AIDED DRAFTING (CAD/D) BASED ON THE MAP PREPARED BY ALEXANDER J RUSIN L.S., APRIL 1993.



SHEET 42

SHEET 41



SHEET 44.01

2
56.62 Ac±
TOTAL
EXEMPT
TOWNSHIP OF LIVINGSTON

THIS MAP WAS FORMALLY
CERTIFIED BY THE
DIVISION OF TAXATION ON
JANUARY 27, 1994, SIGNED
BY IVAN HAFTKOWYCZ, CTA AND
ASSIGNED SERIAL NUMBER 756

TAX MAP
TOWNSHIP OF LIVINGSTON
ESSEX COUNTY NEW JERSEY
SCALE: 1" = 100' DATE: APRIL, 1993
ALEXANDER J. RUSIN, L.S.
15 STELTON RD.
PISCATAWAY, NEW JERSEY
TO SHOW CONDITIONS AS OF MARCH 2018