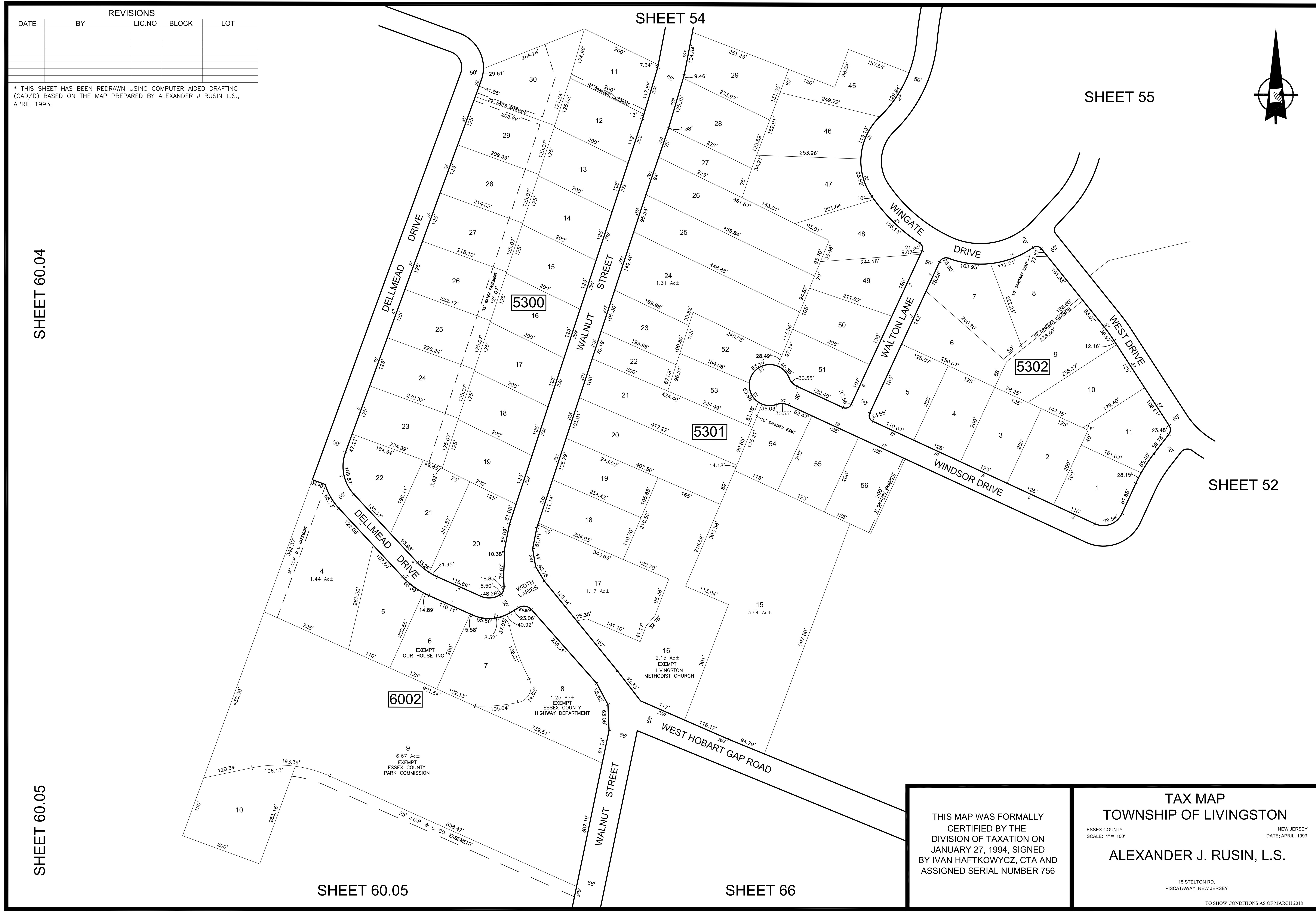
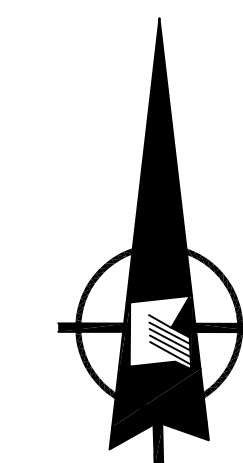


REVISIONS				
DATE	BY	LIC.NO	BLOCK	LOT

\* THIS SHEET HAS BEEN REDRAWN USING COMPUTER AIDED DRAFTING (CAD/D) BASED ON THE MAP PREPARED BY ALEXANDER J. RUSIN L.S., APRIL 1993.



SHEET 60.04

SHEET 60.05

SHEET 54

SHEET 55

SHEET 52

SHEET 60.05

SHEET 66

THIS MAP WAS FORMALLY CERTIFIED BY THE DIVISION OF TAXATION ON JANUARY 27, 1994, SIGNED BY IVAN HAFTKOWYCZ, CTA AND ASSIGNED SERIAL NUMBER 756

**TAX MAP**  
**TOWNSHIP OF LIVINGSTON**  
ESSEX COUNTY  
SCALE: 1" = 100'  
NEW JERSEY  
DATE: APRIL, 1993  
**ALEXANDER J. RUSIN, L.S.**  
15 STELTON RD.  
PISCATAWAY, NEW JERSEY  
TO SHOW CONDITIONS AS OF MARCH 2018